

Waimea/Waimeha River Park Management Plan

September 2025



Waimea/Waimeha River Park Management Plan

September 2025

Published by:

Tasman District Council Private Bag 4 Richmond
Nelson 7050 New Zealand

Version status: v2.0 (final)

Foreword

Ngā iwi o Te Taihū have an extensive and rich history associated with the Waimea/Waimeha River (awa). From its headwaters to the sea, ki uta - ki tai, the river provided for extensive areas of cultivation and mahinga kai sustaining whānau for generations. Significant Māori settlements, such as those at Appleby/Waimea West and near the confluence of the Wai-iti and Wairoa rivers, were established along its banks, reflecting its central role in daily life and cultural practices.

The fertile flat lands of the Waimea Plains, including Richmond, became a focal point for early European settlement in the 1840s. Pastoral farming, market gardening, and horticulture—primarily apple cultivation, later followed by kiwifruit and viticulture—thrived with water supplied from the Waimea/Waimeha River. As Richmond expanded, the river became an increasingly valued destination for the community to visit and enjoy.

The Tasman District Council acknowledges the cultural, spiritual, historical, and traditional associations of iwi with the Waimea/Waimeha river. It also recognises the important role that the river and its margins have played—and continues to play—in the safety and well-being of the communities of the Waimea Plains.

This plan seeks to weave together the aspirations of iwi, the community, and Council's statutory obligations into a unified and meaningful management framework for land owned or controlled by the Council, striving for mutually beneficial outcomes for the long-term future of the river and its margins.

Te Reo Māori is used throughout this plan to describe elements of the environment (te taiao) and convey the Māori worldview (te ao Māori). While definitions are provided in the glossary, English translations may not fully capture the deeper contextual meaning of these terms.

Manaaki whenua, Manaaki awa, Manaaki tangata
Haere whakamua

Care for the land, care for the river, care for the people
Go forward



Table of Contents

Part A - Background	6
Part B - About the Park	10
Part C - Values	13
Part D - Key Issues	18
Part E - What do we want to achieve?	19
Key Outcome Areas	20
1. Te whakahaere waipuke me te whāomoomo oneone / Flood management and soil conservation.....	22
2. Wai ora / Water quality.....	23
3. Te tiaki i ngā momo mōrearea me ngā taonga / Threatened and taonga species protection.....	25
4. Te whakaora i ngā nōhunga māori / Restoration of native habitats	26
5. Te tāmi momo rāwaho / Invasive species control.....	28
6. Te tiaki i ngā taonga tuku iho ā-ahurea / Cultural heritage protection	29
7. Te tiaki horanuku / Landscape protection	30
8. Te whakamahinga me te pārekareka o te hapori / Community use and enjoyment	31
Walking and running.....	33
Biking.....	34
Dog exercising	35
Motorised recreational vehicles.....	36
Horse riding	37
Use of aircraft.....	39
Fishing.....	42
Camping and overnight stays.....	44
9. Ngā mahi arumoni / Commercial activities	45
Gravel extraction and processing.....	45
Agriculture and horticulture	47

10.	Te tūāhanga / Infrastructure	50
Part E - How will we get there?		51
11.	Kaitiakitanga /Guardianship.....	51
12.	Te mahi ngātahi / Working together	51
13.	Te whakamahere / Planning	52
14.	Te reretahi / Coordination.....	53
15.	Park legal status, land acquisition, leasing and licences.....	53
16.	Compliance and enforcement.....	54
Part F - Actions		56
Appendices		70
Appendix 1 - Glossary.....		70
Appendix 2 – Standards.....		71
Appendix 3 – Threatened and Taonga Species - Management Tools		73
Appendix 4 – Mountains to the Sea – Land and Water Review framework.....		74
Appendix 5 - References.....		75
Appendix 6 – Park Area.....		77
Appendix 7 – Management Maps.....		79

Part A – Background

Introduction

The Tasman District Council (the Council) owns over 409 hectares of land along the margins of the Waimea/Waimeha River (the River) and the lower Wairoa and Wai-iti Rivers. Most of this land is held in freehold title for river control and soil conservation purposes. In addition, the Council has management control over large areas of the riverbed and adjacent unformed legal roads.

In response to community interest expressed to the Council in 2009 to use the land for purposes beyond river control and soil conservation, the various parcels were grouped together as the Waimea River Park (the Park). Consultation was subsequently conducted with iwi, stakeholders, and the wider community, leading to the development of a draft management statement. This work progressed further, culminating in 2010 with a management plan for the Park. The plan aimed to enhance values and uses such as nature conservation, historic resource protection, public access, and recreation—while maintaining the primary purposes. It has provided valuable guidance since then for managing the area, in a similar way to other formal Council reserve management plans (RMPs).

Significant changes since 2010

There have been a variety of changes that have occurred since 2010 that directly affect the management and use of the Park. This Plan seeks to incorporate the necessary response to these changes into policy direction to guide management and development decisions for this important area into the future.

Legislative Changes

- Te Tau Ihu Treaty Settlements (2014)
- National Policy Statement for Freshwater (2020) and associated catchment management planning
- National Policy Statement for Indigenous Biodiversity (2023)

Environmental Changes

- Development of the Waimea Community Dam
- Extreme weather events, particularly droughts and floods with the likelihood that these will intensify and become more frequent into the future
- Greater community recognition of natural values and interest in how reserves are managed and willingness to participate in restoration activities such as planting and pest trapping

Recreational Changes

- Development of Tasman’s Great Taste Trail
- Extensive residential development nearby, with increased use and importance of this area for recreation
- Further gravel extraction, formation, planting and use of the Challis Island ponds for promoting and developing sport fishing
- Increased casual use of berm areas and the riverbed by motorised recreational equipment such as four-wheel drives and motorbikes

Economic Changes

- Increasing intensification of surrounding land use, including expansion of viticulture and horticulture
- Increasing demand for aggregate for construction

Review process

While most of the land is not subject to the Reserves Act 1977, the process to develop the 2010 Plan and this plan has followed the process provided for within the Reserves Act 1977.¹

Over 2024, engagement with Te Tauihu iwi was undertaken and an invitation provided for suggestions and ideas from stakeholders and the wider community for inclusion in a draft Plan (the Plan). The Plan was publicly notified on 13th May 2025. Submissions closed on 11th June 2025. In total, 61 submissions were received on the draft Plan. The draft plan was amended and subsequently adopted by the Council at a meeting of the Strategy & Policy Committee on 18th September 2025.

Plan Structure

The Plan includes an overview of the key values of importance within the Park to iwi and the community and key issues identified through the consultation process. It then identifies the various outcomes sought for the Park, their relative priority, and how the Park can best contribute towards the wider vision, outcomes and aspirations established for the catchment through the Te Mana o te Wai/Tasman Resource Management Plan (TRMP) Land and Water review process. Objectives, policies and actions have then been identified to provide a framework to support the achievement of each outcome area.

The Plan will provide the Council with a framework for day to day and longer-term management for key outcomes of flood management, soil conservation and water quality, and where possible, other outcomes such as biodiversity restoration and community use and enjoyment.

It will also serve as a valuable resource document to inform the Council's Long Term Plan (LTP) and Annual Plan processes over the next 10 years.

¹ Section 41, Reserves Act 1977

Legislative and policy context

Te Tiriti o Waitangi

Te Tiriti o Waitangi is the primary framework through which the relationship between the Crown and Māori is defined. Territorial authorities have delegated responsibilities of governance from the Crown. These responsibilities and obligations are stated in relevant legislation such as the Local Government Act 2002 and the Resource Management Act 1991. The relationship between Iwi and the Councils recognises Te Tiriti o Waitangi and seeks to act in accordance with the evolving principles and practices that give effect to Te Tiriti now and into the future. Te Tauihu Iwi and Councils have recently signed an agreement to affirm their commitment to maintaining a strong partnership and further strengthening ties to achieve better outcomes.² By prioritising a Te Tiriti centric approach, the agreement promotes the genuine participation of Iwi in the strategic direction of Te Tauihu.

Te Tau Ihu Settlement Acts 2014

The following settlements acknowledge past injustices and seek to provide redress, while also laying a foundation for future relationships based on partnership, mutual respect, and shared aspirations for the future.

- Ngāti Apa ki te Rā Tō, Ngāti Kuia, and Rangitāne o Wairau Claims Settlement Act 2014
- Ngāti Koata, Ngāti Rārua, Ngāti Tama ki Te Tau Ihu, and Te Ātiawa o Te Waka-a-Māui Claims Settlement Act 2014
- Ngāti Toa Rangatira Claims Settlement Act 2014

² Together Te Tauihu – A Partnership Agreement for a Stronger Te Tauihu (2023)

These Acts, and statutory acknowledgements within them, affirm the mana of the Iwi for the river and its margins, providing a foundation for their ongoing partnership with the Council in the current and future management and development of the park.

Local Government Act 2002 (LGA)

The LGA provides the purpose for local government which is described as:

- To enable democratic local decision-making and action by, and on behalf of, communities and
- To promote the social, economic, environmental and cultural well-being of communities in the present and for the future.

Resource Management Act 1991 (RMA)

The purpose of the RMA is to promote the sustainable management of natural and physical resources across the district.

The Tasman Resource Management Plan (TRMP) provides the necessary direction and mechanisms to achieve this purpose.

The National Policy Statement for Freshwater Management (NPS-FM) 2020 and associated Regulations provides the central concept for freshwater management - Te Mana o te Wai. This prioritises the health and wellbeing of water before providing for the health needs of people and other uses thereafter. This approach is required to be included within Regional Policy Statements and Resource Management Plan rules for land and freshwater use.

A review of the Land and Water section of this plan has commenced with important draft high level vision goals and objectives identified for the Waimea/Waimeha catchment.

The NZ Coastal Policy Statement guides local authorities in their day-to-day management of the coastal environment under the Resource Management Act. It seeks to safeguard the integrity, form, function and resilience of the coastal environment and sustain its ecosystems, preserve the natural character, provide for use and community wellbeing, manage risks and give effect to Treaty principles. This policy has direct relevance for lower areas of the Park adjacent to or adjoining the Waimea Inlet.

The Resource Management (National Environmental Standard for Assessing and Managing Contaminants in Soil to Protect Human Health) Regulations 2011 also place requirements to actively manage risks from potentially contaminated sites of which there are several located within or close to the Park.

Reserves Act 1977

The Reserves Act 1977 was established to acquire, preserve and manage areas for their conservation values or public recreational and educational values. Several areas of land included within the Park are subject to this legislation and have statutory policies for their management that take precedence over policies contained within this plan. These are included within the Moutere Waimea Ward Reserve Management Plan and the Richmond Ward Reserve Management Plan.³

³ Refer to Appendix 6 for a summary of these reserves

Other Plans and /Strategies

There are several other Council or other strategic documents that provide management direction relevant to the Park. The objectives and policies contained within this management plan also need to be consistent with these existing documents:

- Moutere Waimea Ward Reserve Management Plan
- Richmond Ward Reserve Management Plan
- Reserves General Policies
- Rivers Activity Management Plan
- Catchment Enhancement Strategy
- Tasman Biodiversity Strategy
- Waimea Inlet Strategy
- Kotahitanga mō te Taiao Strategy
- Nelson Tasman Future Development Strategy
- Iwi management plans

Part B – About the Park

Park Extent

The Waimea/Waimeha River Park includes Council-owned and controlled land along both sides of the Waimea, lower Wai-iti, and Wairoa Rivers between Brightwater and the Waimea Inlet.⁴

The 2010 Plan included all Council-owned land within the stopbanks, including part of the Appleby Bridge Recreation Reserve.

Since then, additional land in the lower river delta has been acquired, with a notable increase in wetland and saltmarsh restoration efforts and public use, extending beyond the 2010 boundary.

Although the Waimea Inlet Strategy and Action Plan provide guidance in the management of the inlet, and the Moutere-Waimea Ward Reserve Management Plan provides policies for the Pearl Creek Reserve, much of the delta area lacks specific management policies for Council as landowner and controlling authority. This area holds significant ecological value, requiring stricter management to protect sensitive habitats in line with existing policies. Expanding the Park to include the delta will strengthen ecological and hydrological connections between the river and the inlet, while providing opportunities for funding for restoration and enhancement projects, to be potentially supported by Park generated revenue.

Additionally, the 2010 Plan covered only part of the land between the Wai-iti and Wairoa Rivers and Waimea West Road, Bryant Road, and State Highway 6 (SH6) despite the Waimea West Walkway extending beyond the 2010 Plan boundary to Waimea West Road. The development of Tasman's Great Taste Trail (TGTT) swing bridge over the Wairoa River has now also added new links to Bryant Road and beyond to Brightwater.

Land tenure investigations show that the Council manages much of these areas, both upstream and downstream of the 2010 boundaries, making its inclusion in the updated Plan a logical step.



⁴ Refer to Appendix 6

Place in the landscape

Natural History

The Wairoa River originates in the mountains of the Richmond Ranges, while the Wai-iti River flows from the lower-lying Moutere Hills to the west. The two rivers converge below Brightwater, forming the Waimea/Waimeha River. The original name, "Waimeha," meaning "brackish" or "insipid water," reflects the river's characteristics as it passed through swampy areas on its way to the Waimea Inlet near Moturoa Island.

The river replenishes groundwater, which supports extensive horticultural production on the Waimea Plains, and provides water for urban supply. During summer, the river's lower reaches often experience very low flows. However, this issue may be partially mitigated by the recent commissioning of the Waimea Community Dam.

The Waimea Plains consist of alluvial sediments deposited through repeated cycles of deposition and erosion, resulting in the "Ranzau" soils that dominate the area today. Historically, the plains were almost entirely covered in podocarp forests, dominated by kahikatea, mataī, tōtara, lowland ribbonwood/mānatu, tītoki, and various hardwood trees. Wetland vegetation thrived in poorly drained areas, old river channels, and near the Waimea Inlet. During floods, the river overflowed into these wetlands, occasionally carving new channels through the riparian forest. The river once meandered across a wider bed than it does today, with more extensive gravel beaches and flood channels.

Extensive wetland ecosystems, including fertile lowland swamps, supported vast areas of harakeke, sedges, and rushes, transitioning to eelgrass, saline turf, and saltmarsh as the river approached the Waimea Inlet. Wildlife was abundant, with kererū and other forest birds thriving in the podocarp forest, while the river and estuary teemed with wetland

birds, fish, and invertebrates.

Since human arrival, these forests have been cleared for cultivation—first by Māori and later by European settlers. Wetlands were drained and filled, and gravel was extracted to support the development of the growing urban areas of Nelson and Richmond.

Human History

The Waimea/Waimeha River, inlet, and the surrounding catchment hold a rich Māori history, with numerous occupation and cultivation sites (mahinga kai) that sustained whānau for generations. The fertile plains, lowland forests, wetlands, freshwater and estuarine ecosystems, and sheltered bays provided an abundance of resources.

The river and its adjacent estuarine waters at the mouth were important sources of mahinga kai. Its pure waters were rich in fish, including kōkopu, īnanga, tuna, pātiki, and kahawai, as well as kōura. The area also provided an abundant supply of birds, such as kākā, kererū, and korimako (bellbird), for harvest. Harakeke was widespread and highly valued as a source of weaving material.

Approximately 400 hectares on the western Waimea Plains were cultivated by Māori over hundreds of years. Water from the river was used for irrigation, soil fertility enhanced by the addition of vegetable matter, wood ash, sand and fine gravel, and temperature improved using ash covered rocks. These improvements made the plains ideal for growing kūmara. These gardens were located on both sides of the river near Appleby and at Waimea West, between the river and Eves Valley Stream.

Several significant Māori kāinga and pā were located along the river margins, including a large settlement at Appleby and another near the former confluence of the Wai-iti and Wairoa Rivers. Pathways along the river margins provided access between settlements and to mahinga kai sites.

The river was also a significant ara tawhito (traditional route) providing access to the Rotoiti area and from there east to Wairau and west to Te Tai Poutini. This was an important trade route between Te Tauihu and Te Poutini.

European settlers later established farms on the Waimea Plains. Cotterell's Landing at Pearl Creek, located near the lower reaches of the river, became an important crossing point for travellers between Nelson and Moutere. The river itself also provided a corridor for travelling further up the valley to Waimea West and beyond.

The soils of the Waimea Plains adjacent to the river, supported by a favourable climate and ample groundwater for irrigation, remain extremely valuable for producing food.

Modifications to the river berm lands began in the 1960s, after the land was vested in the Nelson Catchment Board for "soil conservation and river control purposes." Stop banks were constructed during 1963 and 1964, which straightened and confined the river to its current corridor.

Part C – Values

Flood Protection

The Waimea/Waimeha River carries water that falls within its catchment to the sea, supporting human settlement and use of the Waimea Plains over centuries. However, human proximity to the river brings risk from flooding and erosion. Active river management by various catchment management organisations, primarily since the introduction of the Soil Conservation and River Control Act in 1941, has seen the installation of stopbanks and the establishment of the Council-owned 'Park' area for the purpose of river control, protecting human life and the economic productivity of the Waimea Plains. This continues to be the primary purpose of the Park, one that is becoming increasingly important with the rising frequency and severity of flood events, such as experienced in June/July 2025.

Te Ao Māori

Māori values are shaped by te ao Māori, the Māori worldview. te ao Māori is holistic and based on whakapapa (genealogy) to atua kaitiaki (deity gods) and tūpuna, tikanga, kawa and the relationship between whānau, hapū and iwi and the natural world, flora and fauna and all living things.

Ahi kā roa or continual occupation conveys whanaungatanga – the relationships whānau, hapū and iwi have upheld since their arrival to Te Taihū. Mana and connections with the whenua (land) have been maintained in the rohe through an ongoing commitment to 'keep the home fires burning, these relationships are founded on te ao Māori.

Relationships with the natural world originate through whakapapa

(ancestral connections). Inter-generational relationships bind whānau, hapū and iwi to the natural world – ensuring respect for ngā atua kaitiaki (spiritual guardians) and ngā taonga (sacred resources and ecosystems) within their domains. There is an intense relationship to the environment, the mauri or life force that is contained in all parts of the natural environment and that binds the spiritual and physical world.⁵ It is of great importance for present day whānau, hapū and iwi continue to implement kaitiakitanga (inherited obligations) to uphold the cultural, spiritual and environmental integrity and hauora (health) of the rohe for future generations in accordance with tikanga (customary practices) and the following values:

Kaitiakitanga

Preservation, conservation, maintenance, and management of the awa and environs (including flora, fauna, aquatic and marine) for future generations.

Manaakitanga

To care for each other, to be respectful, and an act of reciprocity of natural resources to be shared with others.

Mātauranga Māori

Acceptance, acknowledgement and application of Māori knowledge within the planning and delivery of key actions.

Mauri

The principal life force of our environs is protected including their tapu and wairua.

⁵ Ref – Tasman District Council Responsible Camping Strategy (2018)

Te Mana o te Wai

Te Mana o te Wai recognises the whole-of-system approach to wai, from maunga to moana, or ki uta ki tai with a kaitiakitanga focus on restoring and preserving the balance between water (wai), the wider environment (taiao), and people (tāngata). This all of system approach utilises tikanga, and mātauranga Māori. In te ao Māori, rivers have a mauri, wairua, tapu and mana of their own - they are entities in their own right. They are central to iwi history and identity.

As part of the Te Tauihu Treaty Settlement process finalised in 2014, Statutory Acknowledgements and Statements of Association recognised the historical connection of ngā iwi o Te Tauihu with the Waimea/Waimeha River and other geographical features within the rohe. The importance of the river is expressed through these excerpts from the 2014 Te Tau Ihu Treaty Settlement Statutory Acknowledgements:

Ngāti Apa Ki Te Rā Tō

"The Waimea River is a symbol for Ngāti Apa people of the intense nature of their relationship to their environment, the mauri or life force that is contained in all parts of the natural environment and that binds the spiritual and physical world."

Ngāti Kuia

"This wāhi tapu incorporates our cultural values of ake tupuna. It is a place which our tūpuna explored and used. It incorporates our cultural values of take ahi kā. It is a core part of our cultural identity."

Rangitāne

"This is a deeply significant site for Rangitāne and the other Kurahaupō iwi. The main pā is located just behind what is now the Appleby School site. Smaller 'satellite' pā were located elsewhere on the banks of the Waimea River and at the junction of the Wairoa and Wai-iti rivers"

Ngāti Tama

"The significance of the Waimea River relates to the awa itself but also to the entire catchment from the waters flowing from the mountains (Gordon Range, Eastern slopes of the Kahukura (Richmond Ranges) and Bryant Ranges and the Dun Mountain) through the flood plains to coastal waters and out to sea."

Ngāti Koata

"The Waimea (along with the Pelorus, Maitai, and Whangamoa) awa is taonga to Ngāti Kōata. The wai flowing through these rivers symbolises the spiritual link between the past and present. Each awa has a mauri and wairua of its own."

Te Ātiawa o te Waka a Māui

"The Waimeha River is sacred to Te Ātiawa o Te Waka-a-Māui. Traditionally, the Waimeha River provided a wealth of resources to sustain Te Ātiawa o Te Waka-a-Māui tūpuna. The mauri of ngā awa represents the essence that binds the physical and spiritual elements of all things together, generating and upholding all life."

Ngāti Rārua

"The Waimeha River is immersed in Māori history. There are numerous wāhi tapu associated with this abundant food basket, linking present day Ngāti Rārua physically and emotionally with their tūpuna. The cultural identity and iwi wellbeing of Ngāti Rārua is intertwined with this awa."

Ngāti Toa Rangatira

"The river mouth of the Waimea is located in Tasman Bay, opposite Rabbit Island. The river and the surrounding area are of cultural, historical, spiritual and traditional significance to Ngāti Toa Rangatira"

Cultural and Heritage Values

As described in Part B, the fertile plains of the Waimea have a long and rich Māori history. Over hundreds of years, a succession of iwi established various kāinga, pā and areas of significant cultivation.

Little evidence of the settlements, gardens, or associated features remain, because once the land transferred to European ownership, farming practices soon covered most visible traces. However, features of pā and kāinga may survive beneath the cultivation layer and residual kūmara pits, modified darker soils, and gravel 'borrow pits' are likely to remain in some areas.

For ngā iwi, the importance of cultural sites and areas remains strong, even when there is no longer physical evidence of Māori occupation. Many cultural values encompass intangible aspects of Māori culture that provide present-day whānau with a physical and spiritual link to their tūpuna. Consequently, sites of cultural significance to Te Taihū Iwi continue to exist within or close to the Park. These are likely to include wāhi tapu, wāhi taonga, kāinga and pā sites, cultivation grounds, and mahinga kai.⁶

The river and its water also continue to be considered a taonga and living entity that holds mauri and wairua, with intrinsic value beyond its utility.⁷

Natural Values

The river berms throughout the Park are now dominated by introduced vegetation, including various invasive plant pests such as old man's beard, gorse, broom, barberry, and several willow and poplar species.

Large areas of pasture are also present, most of which are leased for grazing.

Across the wider Waimea Plains, less than 10% of the original indigenous vegetation remains which has resulted in greatly reduced biodiversity values. While native forest restoration planting has taken place in some locations since the 2010 Plan these are relatively small in scale. Early plantings in some places also included introduced oak trees, some of which are now mature large trees.

Despite this loss of native habitat, the riverbed and its margins continue to provide habitat for both indigenous and introduced wildlife, including several threatened species. The open gravel bed of the river, for instance, offers important nesting and foraging grounds for black-fronted tern, Caspian tern, black shag, little shag, pied shag, South Island (SI) pied oystercatcher, banded and black fronted dotterels. The bermlands also support pheasant and California quail populations popular with gamebird hunters.

While only small fragments of freshwater and saline wetlands remain, significant restoration efforts have been underway for many years within the Park, notably at Pearl Creek, Challies Island, and most recently in the delta area. These lower reaches of the river and estuary margins provide habitat for Australasian bittern, banded rail, spotless crane, marsh crane, and fernbird.

The river supports diverse populations of indigenous fish, including longfin eel, shortfin eel, common bully, upland bully, redfin bully, bluegill bully, common smelt, kōkopu, īnanga, and limited numbers of torrentfish in the riffles.

⁶ Despite no current records within the NZ Archaeological Association database (Archsite)

⁷ Ngāti Tama 2024

The rare giant kōkopu is still found in Pearl Creek, which is spring fed. In the lower reaches, flounder and yellow-eyed mullet also occur. The introduced fishery primarily features brown trout, and a very popular stocked rainbow trout fishery within the Waimea/Waimeha fishout ponds. Chinook salmon have also been released in the past and recorded in the river.

The Waimea Inlet is the largest semi-enclosed estuary in the South Island. It is internationally significant for migratory bird species and nationally significant for other endangered or threatened species. These include birds such as bar-tailed godwits, red knot, SI and variable oystercatchers, wrybills white herons, royal spoonbills and little egrets as well as plants like coastal peppergrass and grey saltbush. Although most of the inlet lies outside the Park, management practices within the Park and further upstream have a significant influence on the condition of the inlet for these and other species.

Landscape Values

Although the river and its margins are a distinctive feature from the air, they are not highly visible from the ground. State Highways 6 and 60, (SH6, SH60) along with Waimea West Road, provide only brief but pleasant glimpses of the river and its surroundings. Existing tracks and trails including Tasman's Great Taste Trail, Two River Walkway, and Waimea West Walkway provide further opportunities to enjoy the natural river landscape character.

Some areas, such as the gravel processing plant and large stockpiles of gravels adjacent to SH60 and the river, while partially screened, are of low landscape value.

Despite its relatively limited landscape profile, much of the Park still provides a 'natural' strip of landscape that contrasts with the surrounding agricultural and horticultural activities on the Waimea Plains. There is an opportunity to enhance sightlines from roads,

tracks, and trails into the Park, as well as to screen and soften those areas with lower landscape value.

Recreation Values

The river has long been popular for a variety of informal recreational activities. Walking, biking, and dog walking are especially common on existing paths such as Tasman's Great Taste Trail, the Two Rivers Walkway, and the Waimea River Walkway.

Swimming is also popular at various locations along the river during the summer months.

There is strong demand for both horse riding and off-road motorised vehicle use; however, both activities are currently poorly provided for. In the case of off-road vehicles, this lack of facilities has led to informal and sometimes inappropriate use of the Park, resulting in damage and conflicts with other users. Although horse riding was included in the 2010 Plan as a target use of the Park, the necessary facilities have yet to be developed. Nonetheless, there are opportunities to better provide for both activities in suitable locations within the park and the surrounding area.

Although fishing does occur in the river, the sport fishing ponds at Challies Island have become especially popular with youth, families, and adults. Many of these users have been introduced to trout fishing and mentored by the Nelson Trout Fishing Club using the ponds as well as the river itself. The Sports Fishing for Youth Trust and Fish & Game-Nelson Marlborough (Fish and Game) and the Club have also been facilitating increased access for elderly and disabled anglers. In addition, whitebaiting and mullet fishing occur in the lower reaches of the river.

As public use of the Park has grown, the suitability of once highly valued hunting areas for pheasant, California quail, and other game birds has declined.

However, the remaining undeveloped sections of the Park that hunters consider safe to use are still highly valued

These areas are primarily for pheasant hunting, although some limited duck hunting also still occurs below the Appleby bridge.

The river is also occasionally used by jet boaters during periods of sufficient flow.

Informal recreational use of the Park is largely unmanaged except at developed sites, such as at Challies Island, Appleby Bridge and existing walking and cycle trails. The Park has also been subject to inappropriate visitor behaviour including off-road vehicle access to the river channel, dumping of rubbish, vandalism and graffiti, and damage to gates and fences to gain off-road vehicle access to inappropriate areas.

Part D – Key Issues

The following key issues have emerged through the Plan review process and from feedback from ngā Iwi, stakeholders and the wider community:

- Actions the Council, as landowner, can take to contribute to catchment-wide objectives for the river, including restoring ecosystem health, habitats and enhancing the wairua and mauri.
- Incorporating climate change projections of increased flood and drought frequency and severity into Park management.
- Providing for a range of additional activities within the Park without compromising essential flood management and soil conservation objectives.
- Determining the role of gravel extraction and processing in contributing to projected industry demand for aggregates, while ensuring effective flood management, support for community recreational needs, and protection and restoration of natural values.
- Facilitating enjoyment of the area by offering a variety of recreational activities while effectively managing those that negatively affect visitor experience or damage the environment, such as motorised vehicle use within the active river channel
- Maximising the potential of this corridor of public land adjacent to a major river, by providing access, connections, and places for both people and wildlife.



Part E – What do we want to achieve?

Moemoeā / Vision

The Park is a very small part of the much more extensive Waimea/Waimeha River catchment.

This area has been identified as a Freshwater Management Unit (FMU) as part of the current review of the land and water section of the TRMP, which implements the National Policy Statement for Freshwater Management 2020 (NPS-FM). This process takes an integrated, ki uta ki tai (mountains to the sea) approach, recognising the connectivity between surface water and groundwater, between freshwater, land and coastal receiving environments, and the relationships people have with freshwater.

It also gives effect to the Te Mana o te Wai concept for freshwater management which recognises the fundamental importance of water and the importance of maintaining its health to protect the health and wellbeing of the wider environment and our communities.

Following consultation with iwi, stakeholders and the wider community, a vision values and outcomes for each catchment (FMU) has been developed by the Environmental Policy team.

The objectives and policies within this plan are intended to contribute towards this long-term vision for the benefit of future generations as described in Appendix 4.

E waru ngā pou – Our eight guiding principles

- Manaakitia te taiao - Working with nature
Seeking to reduce exposure of vulnerable assets to river movement, provide for natural river processes, and, where possible, provide room for the river to move
- Mahi ngātahi - Working together
Our shared efforts produce mutually beneficial outcomes
- Te Aumangea - Resilience
Management that improves the ability of the Park and surrounding areas to recover from floods, droughts and other events
- Urutau - Adaptability
Ability to adjust management to accommodate changing circumstances
- Te Taurite - Balance
Actively using the Park to benefit the community while making a net positive contribution to the health and natural values of the river and supporting broader environmental management objectives including effective flood management
- He Mahinga Maha - Multiple Use
Providing for a range of activities, allocating spaces and establishing shared use protocols to maximise opportunities and minimise conflicts
- Te Tomopai - Accessibility
Open community access is available for, unless restrictions are necessary for safety, security or other operational reasons
- Te Raungāwari - Pragmatism
Setting policy direction that is practical, achievable and enforceable

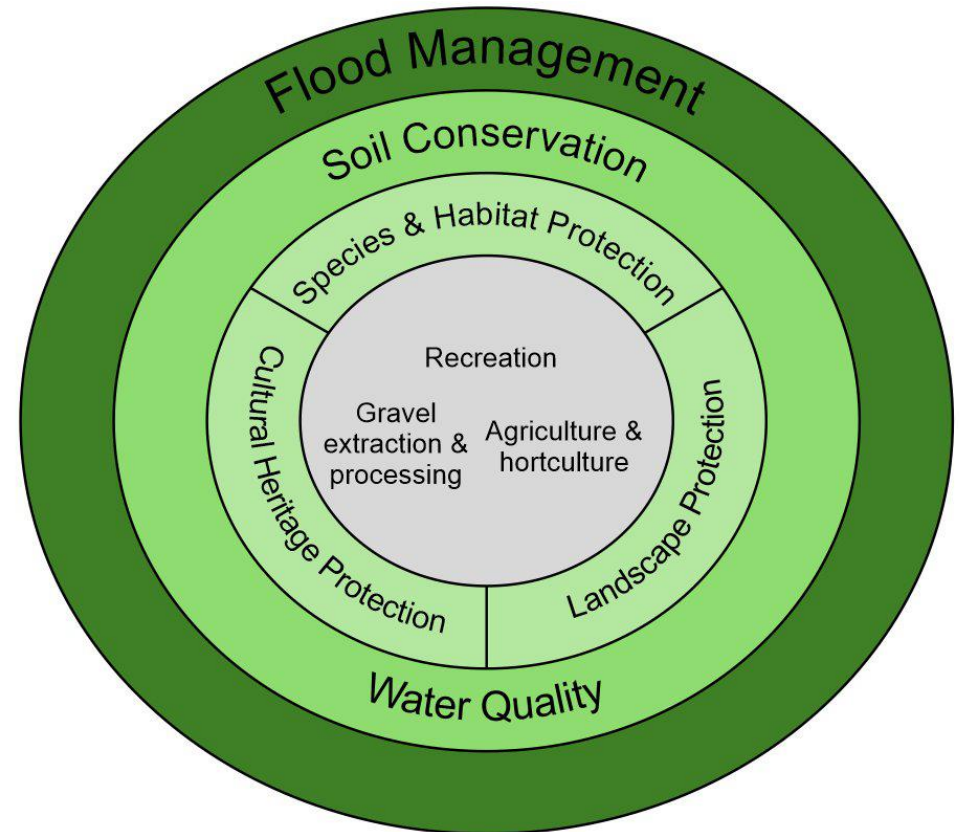
Key Outcome Areas

Framework

This framework reaffirms that the primary purpose of the Council-owned land is river and flood management. In addition to reducing flood risks, effective river and berm-land management also helps conserve adjacent soils, manage sediment loads in the river, and reduce runoff that affects water quality. Other factors influencing water quality are primarily regulated by the TRMP rather than by the policies in this plan.

Within these management parameters, other outcomes can also be achieved in the park. Most importantly those that the Council has statutory obligations under the RMA⁸ to protect, including biodiversity, heritage, and landscape values. As landowner, the Council has an opportunity to actively support these outcomes.

Recreational and commercial uses of the park are also important but must be provided for and controlled in ways that do not interfere with effective flood management and soil conservation, or adversely affect water quality, biodiversity, cultural, or landscape values.



⁸ Resource Management Act 1991, Section 6

Outcomes	Objectives	Supported by
Flood management and soil conservation	Flood flows do not create safety risks for the community or cause significant damage to surrounding Waimea Plains soils, land uses and the Waimea Inlet. The floodplain within the stopbanks is resilient to floods and the mobilisation of soil and other materials.	<ul style="list-style-type: none"> • Restoration of native habitats • Agriculture
Water quality	The management, development and use of the Park positively contributes towards water quality objectives for the river, aquifer and the Waimea Inlet.	<ul style="list-style-type: none"> • Restoration of native habitats
Threatened and taonga species protection	Threatened and taonga species are not adversely affected by management and use of the Park, and opportunities are taken to enhance their habitats.	Restoration of native habitats
Restoration of native habitats	Restore and enhance degraded ecosystems and habitats within the Park, such as lowland alluvial forest and wetlands that are poorly represented within the district.	<ul style="list-style-type: none"> • Gravel extraction • Invasive species control
Invasive species control	Landowner obligations under the RPMP9 are met and targeted control of other invasive species occurs to enable Plan objectives to be achieved.	<ul style="list-style-type: none"> • Agriculture
Cultural heritage protection	Contribute to the restoration of the mauri of the river and native species and ecosystems of heritage value within the Park. Known sites and areas of importance are protected, and as appropriate, the whakapapa for the area is shared.	<ul style="list-style-type: none"> • Restoration of native habitats
Landscape protection	The open riverbed and wetland landscape character bordered by green riparian margins is protected and enhanced.	<ul style="list-style-type: none"> • Restoration of native habitats
Community use and enjoyment	Provide for a range of recreational activities that can be accommodated without negatively impacting on other outcome targets, users or landowners.	<ul style="list-style-type: none"> • Flood management
Gravel extraction and processing	<p>Gravel resources continue to be available from within the Park while ensuring direct net enhancement of other park values following extraction.</p> <p>The presence of processing plants and stockpiles does not present an unacceptable risk to the environment, including the Waimea Inlet, during flood events.</p>	<ul style="list-style-type: none"> • Flood management
Agriculture and horticulture	Pastoral grazing serves as a useful management tool, supporting the Council in achieving effective flood management and other Park outcomes. Other agricultural and horticultural activities that do not positively contribute towards these objectives are not provided for.	<ul style="list-style-type: none"> • Flood management

⁹ Nelson Tasman Regional Pest Management Plan 2024

Policies

1. Te whakahaere waipuke me te whāomoomo oneone / Flood management and soil conservation

Issues

There is a legal obligation and community expectation to contain the river within the existing stopbanks to minimise the risk of flooding or river movement damaging adjacent private properties and the Waimea Plains.

Levels of service for flood management and soil conservation are determined by the Rivers Activity Management Plan. However, this plan can provide a summary of iwi and community aspirations for river management, which may be incorporated into activity management planning.

Nationally, there is a trend toward less ‘hard’ river engineering techniques, allowing for more natural river movement where feasible—



a direction supported by local feedback.

Maintaining flood capacity through carefully managed gravel extraction is also important, provided it does not cause undue bank or bed erosion or lead to excessive sedimentation of the Waimea Inlet.

Increasingly severe storm events are likely to increase the frequency and severity of floods in Tasman’s rivers. Park management must allow for essential flood control measures while minimising other environmental impacts.

Objectives

- 1.1 Flood flows do not create safety risks for the community or cause significant damage to surrounding Waimea Plains soils, land uses and the Waimea Inlet.
- 1.2 The floodplain between the stopbanks is resilient to floods and the mobilisation of soil and other materials.

Policies

Within the levels of service set by the Rivers Activity Management Plan, that flood management and soil conservation activities seek to:

Riverbed management

- 1.1.1 Provide for natural river movement and the maintenance of river features such as meanders and pools.
- 1.1.2 Utilise planting and other green engineering methods over hard engineering solutions, where appropriate.
- 1.1.3 Consider undertaking trials for river control methods that show promise but have not been widely used in the region, such as new ecologically friendly bank stabilisation methods.
- 1.1.4 Limit the use and timing of heavy machinery and vehicle operation within the riverbed to minimise mobilisation of fine

sediments and disturbance to aquatic fauna, riverbed birds and other wildlife

River berm management

- 1.2.1 Manage bermland activities to avoid any impact or encroachment on the stopbanks.
- 1.2.2 Manage bermland activities to those that do not exacerbate flood impacts or increase soil degradation.
- 1.2.3 Prevent investment or development of new assets in the Park that may create greater obligation for a 'defensive' approach to river management.
- 1.2.4 Manage leases and licences to maintain flexibility for land to be made available at short notice for Council river management purposes.
- 1.2.5 Seek opportunities to retire bermland into long-term uses with enduring environmental benefit and low ongoing maintenance costs, such as floodplain wetlands and native plantings.

2. Wai ora / Water quality

Issues

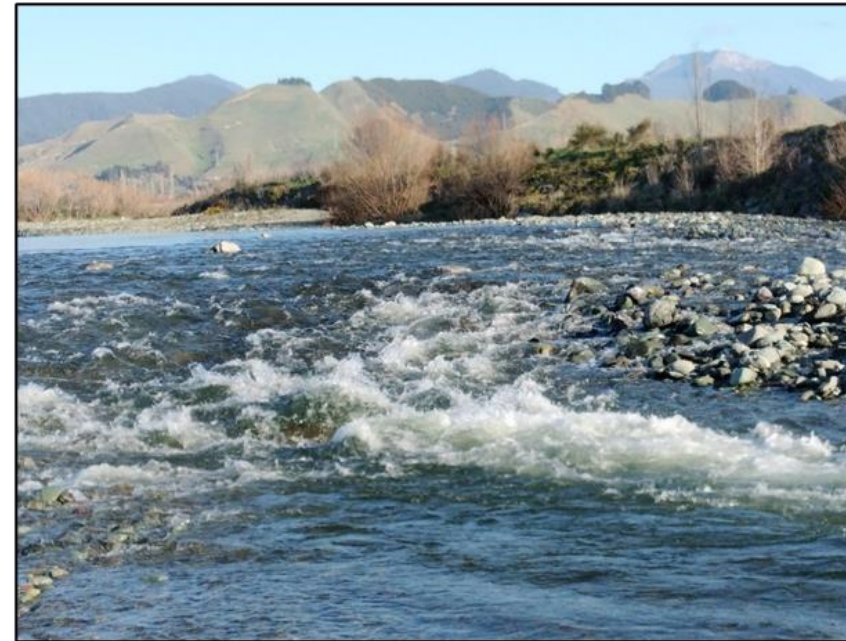
Healthy and clean water is of fundamental importance to iwi and other members of the community.

The river generally has good water clarity and low levels of E coli, nitrates and dissolved reactive phosphorus. However, in the lower reaches, water clarity and quality reduce rapidly, and daily maximum water temperatures can reach high levels over the summer months.

There are also relatively few invertebrates found in the riverbed substrate, which is an indicator of poor water quality.

The lower Wai-iti River has reasonable water quality at average flows, however, it has increasing levels of both nitrates and ammonia. It also has a high coverage of toxic algae (*Microcoleus autumnale*) over the summer months.

Other spring fed streams, within or entering the river, generally have high nitrate levels, low dissolved oxygen and macro invertebrate levels.¹⁰



¹⁰ <https://www.tasman.govt.nz/my-region/environment/environmental-management/water/water-management/freshwater-management-units-2/waimea-fmu>

Intensive horticulture and agricultural use of the Waimea Plains along with associated fertiliser use and water extraction are contributing factors to declining water quality. These issues are currently being managed under the TRMP.

Activities within the Park including grazing, gravel processing and inappropriate motorised vehicle use, can expose various contaminants to runoff into the river. To minimise this risk, these activities should be located carefully and riparian buffer strips planted where necessary to filter surface runoff into the river.

Risks to the river and Waimea Inlet from flood exposure and the mobilisation of material at potential contamination sites¹¹ have been identified, with the ex-Waimea County Council landfill at the delta being of particular concern.

Historically the Park has also been subject to ongoing rubbish dumping, including contaminated materials that threaten downstream water quality. Although this is a challenging issue to manage, strategies are needed to minimise dumping and mitigate its associated impacts.

Objective

2.1 The management, development and use of the Park positively contributes towards water quality objectives for the river, aquifer and the Waimea Inlet.

Policies

2.1.1 Impacts from activities within the park on water quality should be prioritised alongside flood management and soil conservation and any necessary mitigation actions put in place.

2.1.2 Develop and maintain planted riparian buffer strips wherever contaminant runoff may harm water quality. Where appropriate,

include this requirement in lease or licence agreements.

2.1.3 Prohibit activities within the park that involve assets or other contaminant sources that are likely to be mobilised or contribute to poor water quality during flooding events without robust environmental management plans.

2.1.4 Review the existing risk status for leachate or material from the ex-Waimea County Council landfill contaminating the delta wetland and estuary.

Undertake risk assessments for the other four HAIL sites within the park and take appropriate action to mitigate significant risks which may include:

- a) Increasing the groundwater monitoring regime
- b) Taking appropriate steps to further secure or remove rubbish

2.1.5 Actively manage and respond to point source pollution events from rubbish dumping including:

- a) Timely collection of evidence and legal action
- b) Thorough clean up and removal of waste

2.1.6 Active monitoring and enforcement of Resource Consent conditions for consented activities within the Park.

¹¹Hazardous Activities and Industries List (HAIL sites)

3. Te tiaki i ngā momo mōrearea me ngā taonga / Threatened and taonga species protection

Issues

High natural values in the lower river and delta, including the presence of several threatened and at-risk species, require special recognition and policies in the way the Park is used and managed to protect species reliant on this area.



In contrast, the majority of the bermland environment currently holds low value for threatened species. Nevertheless, the river and its riverbed are crucial habitats for species such as the black-fronted tern and banded dotterel which have experienced declines due to reduced river habitat, the invasion of introduced predators and woody weeds, and disturbances from vehicles.¹²

Vehicle use within the riverbed is also damaging the important riffle zones, which serve as the primary habitat for torrentfish and other aquatic species.¹³

¹² Threat status: Black fronted tern – endangered. Banded Dotterel - declining

¹³ Threat status: Torrentfish and most other native freshwater fish - declining

Controlling this issue is challenging due to multiple access points into the Park and the extensive areas of the riverbed that vehicles can traverse once entry is gained.

Dog ownership in the Tasman District has increased substantially in recent years, leading to higher demand for and usage of parks and open spaces for dog walking. Uncontrolled dog access negatively impacts a variety of native wildlife, through predation, disturbance and increasing stress levels. In response, recent amendments to the Dog Bylaw have introduced stricter controls for dogs in the delta area, including dog prohibitions within Pearl Creek Reserve and Pearl Creek Esplanade Reserve. Expansion of this dog prohibition into other areas in the lower river and delta that the Council has management control over, should also be considered in the next Dog Bylaw review.

The loss of alluvial forests and wetlands, along with the reduction in river water quality, has adversely impacted mahinga kai resources. To support the traditional harvesting practices of tangata whenua, it is important to enhance river habitats for various species of eels, fish and birds, as well as harakeke resources.

Objective

3.1 Threatened and taonga species are not adversely affected by management and use of the park, and opportunities are taken to enhance their habitats.¹⁴

Policies

3.1.1 Limit locations and the time of year that vehicles can access priority areas of the riverbed and bermland that are important habitats for threatened and taonga species. This may be achieved through barriers, surveillance and enforcement.

¹⁴ See Appendix 3 for available management actions to protect threatened species

- 3.1.2 Support Dog Bylaw restrictions in locations where threatened species may be at risk.
- 3.1.3 Ensure that opportunities to enhance the habitats of threatened and taonga species within the park are considered in the development and prioritisation of habitat restoration programmes.
- 3.1.4 Liaise with and support other agencies, groups, individuals and iwi in threatened species protection work within the Park
- 3.1.5 Undertake or support monitoring of key threatened and indicator species and use this information to guide Park management.
- 3.1.6 Include threatened and taonga species in iwi cultural health indicator monitoring (CHI) as described in Section 11.

4. Te whakaora i ngā nōhunga māori / Restoration of native habitats

Issues

The lowland alluvial podocarp forests that once spanned the Waimea Plains have been largely lost, remaining only as a few isolated fragments within the broader region. Currently, there are no mature forested areas within the Park, resulting in significant habitat loss for native species and degraded ecological integrity of the area.

Although the 2010 plan identified significant areas for ecosystem restoration within the Waimea Plains, progress has been minimal aside from the 10 Ha Waimea Community Dam offset mitigation planting project, now in its third year.

It is important to review these proposed restoration sites within the context of current strategies and priorities and to assess the capacity to allocate sufficient resources for implementation. For example, the Kotahitanga mo te Taiao Alliance has an emerging goal to restore 15%

of our lowland ecosystems over time.

Wetland areas are also significantly depleted within the Park and the surrounding Tasman District, with over 90% of the original wetlands lost and many of the remaining areas in poor condition.



The lower reaches of the river and delta area adjoining the nationally important Waimea Inlet possess high natural values and have undergone significant restoration efforts in recent years. Numerous opportunities exist to further enhance the work accomplished to date in this and other wetland areas within the Park. The restoration of habitats within the Park is strongly supported by iwi and partner organisations.

Several threats to existing habitats and restoration sites include sedimentation and sea level rise, smothering and exclusion by exotic weeds, and predation by invasive animal pests. Additionally, visitor activities such as the use of motorised vehicles and dog walking can

contribute to habitat damage. Restoration planning must recognise and address these risks.

Objective

- 4.1 Restore and enhance degraded ecosystems and habitats within the park such as lowland alluvial forest and wetlands that are poorly represented within the district.

Policies

- 4.1.1 In conjunction with iwi and other partners, develop an ongoing native habitat restoration work programme with the objective of restoring:
 - a) alluvial podocarp forest, native riparian margins and wildlife corridors and connections at priority locations
 - b) wetland environments at priority locations including sequencing of various salinities considering effects of sea level rise
 - c) freshwater fish habitat, including inanga spawning sites, shade and removal of any remaining fish passage barriers
 - d) open riverbed habitat
- 4.1.2 Work with Waimea Water Ltd in completing the 10Ha Waimea Community Dam offset mitigation planting including ensuring that the site is adequately legally protected as required by the 2015 Environment Court Consent Order.
- 4.1.3 Following the conclusion of the Nelson Tenth's Reserve claim, commence process to increase the level of legal protection for the delta area to Nature Reserve as specified within the

Moutere Waimea Ward Reserves Management Plan¹⁵

- 4.1.4 Undertake further planning for the Challies Island area to better identify and integrate the native habitat, trout fishing and recreation objectives and actions for the entire area.
- 4.1.5 In considering further land-based gravel extraction activities within the Park, opportunities for further restoration of native habitats such as wetlands be pursued in favour of filling extraction areas with clean fill to restore pastoral use.
- 4.1.6 For native habitats to be included in iwi cultural health indicator (CHI) monitoring as described in Section 11.

Note: All areas identified for planting restoration need to be designed and implemented to accommodate and not exacerbate effects from increasingly severe flood events.



¹⁵ Moutere Waimea Reserve Management Plan Section 5.9.2 Policy 5, Page 152

5. Te tāmi momo rāwaho / Invasive species control

Issues

Significant areas of the park are dominated by exotic weed species such as old man's beard, broom, gorse, barberry, various species of willow, and many others.

Located as a lineal feature at the bottom of the Waimea/Waimeha catchment, the spread and reinvasion of invasive species pose significant challenges to any control programs. Therefore, it is crucial that weed and pest control efforts are locally targeted to high-value locations and serve specific protection purposes, such as restoring native vegetation or reducing mortality rates of threatened wildlife.

Achieving broader invasive species control objectives will likely require the further development of biological control methods and other landscape-scale management techniques.

A variety of exotic plant species, such as willow and poplar, have been used and continue to be used for river management purposes. However, some of these species can become invasive, posing significant ecological threats. Careful selection of plant species is essential for future river, flood, and erosion control activities to ensure effective management without compromising native biodiversity.

As described, the river acts as a vector for the spread of invasive species and the receiving environment is the internationally significant Waimea Inlet. If the values of the delta and wider inlet are threatened by weed species transported by the river, consideration should be made as to whether there are any practical options available to reduce this effect.

The river and wetland areas are also at risk from various plant and

animal pests, including water celery, lagarosiphon, egeria, tench, rudd, perch, and koi carp—some of which were deliberately introduced to the region in the past. Mosquitofish (*Gambusia*) are also likely present in the slower-moving tributaries of the river. The RPMP contains strategies to manage each of these pest species.

Objective

- 5.1 Landowner obligations under the Regional Pest Management Plan¹⁶ are met and targeted control of other invasive species occurs to enable Plan objectives to be achieved.

Policies

- 5.1.1 Undertake targeted invasive species control where necessary to protect natural values or public enjoyment and use of the Park and adjacent Waimea Inlet.
- 5.1.2 As landowner, undertake plant and animal pest control as required by the RPMP.
- 5.1.3 Where practical and effective, employ native plants to support bank stabilisation and erosion control works to provide additional biodiversity and enhanced amenity values. If willows or poplar are used, ensure that these are sterile and not easily propagated
- 5.1.4 If weed spread from the river into the delta and Waimea Inlet is causing significant harm to natural values, and it is feasible, that targeted weed control should be considered to reduce the river's role as a vector.

¹⁶ Nelson Tasman Regional Pest Management Plan 2024

6. Te tiaki i ngā taonga tuku iho ā-ahurea / Cultural heritage protection

Issues

As described in Part C, the Waimea/Waimeha and other rivers in the region are taonga to ngā iwi. The strong relationship with these rivers forms a core part of their cultural identity. This significance encompasses the entire catchment, from waters flowing from the mountains—such as the Gordon Range, the eastern slopes of Kahukura (Richmond Range), the Bryant Ranges, and Dun Mountain—through the flood plains to coastal waters and out to sea.

Given the importance of the river and its ecosystem, iwi have a strong desire to exercise kaitiakitanga to protect and restore the mauri (life force) of the water, the river ecosystem, and the wider catchment. This is particularly important given the extensive modification and degradation the river and catchment have experienced, including the loss of native forest, increased runoff of sediment and contaminants, and the introduction of plant and animal pests. These factors have all contributed to damaging the mauri of the river and undermining its previously important role as a mahinga kai (food and flax gathering area).

It is likely that a variety of archaeological evidence remains in the area given the high level of occupation and use of the river and surrounding plains over hundreds of years. These physical reminders may include residual kūmara pits, modified darker soils and gravel 'borrow pits.'

While there are no site formal records currently located within the Park¹⁷ policies are required to ensure development activity does not damage important sites and a process is in place for accidental discovery of sites.

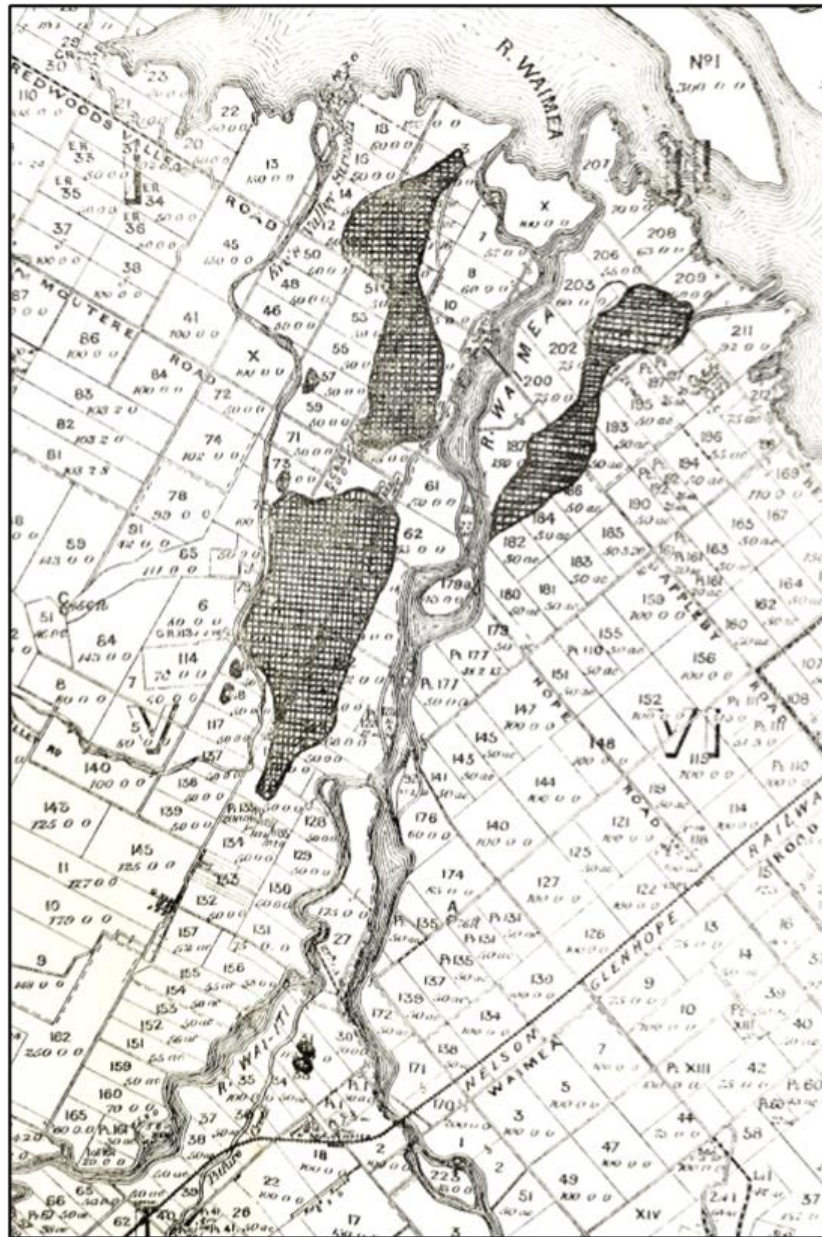
Objectives

- 6.1 Contribute to the restoration of the mauri of the river and native species and ecosystems of heritage value within the Park.
- 6.2 Protect sites and areas of cultural importance, and as appropriate, share the whakapapa for the area.

Policies

- 6.1.1 Provide for iwi to exercise kaitiakitanga over the river and wider catchment, (Refer to section 11).
- 6.1.2 Ensure habitat enhancement programmes seek to enhance the mauri and traditional kai and other resources (such as tuna, īnanga and harakeke) and provide for cultural harvest.
- 6.1.3 Reduce the risk of damaging wāhi tapu other cultural values through engagement with te tauihu iwi to determine appropriate mitigation which may include:
 - a) Undertaking an archaeological assessment prior to proposed land disturbance activities that could affect important cultural sites or values
 - b) Tikanga briefing to contractors prior to the commencement of work and iwi monitoring during significant works as well as strict adherence with accidental discovery protocols
- 6.2.1 Consider providing information signage and/or Pou whenua or waharoa at significant sites where the risk of vandalism and flood damage is low and where this increases community understanding and protection of cultural heritage.

¹⁷ NZAA Arch Site, Tasman Resource Management Plan



Waimea Gardens (Rigg and Bruce)

7. Te tiaki horanuku / Landscape protection

Issues

The Park contains a wide range of features and activities, each with varying amenity values. In providing for different activities there is a need to minimise their negative visual impacts on the landscape while protecting and enhancing the park's positive landscape features and amenity value.



Objectives

7.1 The open riverbed and wetland landscape character bordered by green riparian margins is protected and enhanced.

Policies

- 7.1.1 Activities that may adversely affect the visual amenity of Park features are controlled to limit effects.
- 7.1.2 Where possible, river and riparian management will seek to maintain and enhance the natural river environment.

8. Te whakamahinga me te pārekareka o te hapori / Community use and enjoyment

Issues

One of the key issues for the use and enjoyment of the Park by the community is to ensure ease of access and a high-quality and safe experience for visitors without adversely affecting other important Park activities, the environment or other users.

This includes provision for a range of different types of recreational activities and catering to different visitor abilities. Some activities such as walking, picnicking and swimming have low impacts, whereas motorised off-road vehicle use, horse riding, dog walking and bikes (particularly ebikes) require higher levels of control to address potential environmental and safety concerns.

Unrestricted access and limited 'informal surveillance' in the area has led to challenges such as vandalism, littering, and other antisocial behaviour. To protect the Park's values, access restrictions in some areas, particularly for vehicles and during nighttime hours, may need to be considered to address these ongoing issues.

Objective

8.1 Provide for a range of recreational activities that can be accommodated without negatively impacting on other outcome targets, users or landowners.

Policies

Access and availability

8.1.3 Ensure Park entrances are easy to find, use and meet the needs of a range of visitors.¹⁸

- 8.1.4 As a default, manage all areas of the Park to remain available for public use, unless restrictions are required to ensure safety, prevent adverse impacts or to enable approved river management or commercial operations to be undertaken.
- 8.1.5 Where practical, ensure that visitor facilities are available in suitable locations for people with limited mobility.
- 8.1.6 Close public vehicle access between Clover Road West and Bartlett Road to reduce potential conflict with other users.
- 8.1.7 Consider future further closure of public vehicle access between Bartlett Road and Blackbyre Road to reduce potential conflict with bermland tenants and other users, and to reduce extent and frequency of illegal rubbish dumping.

Safety and health

- 8.1.8 Manage safety risks for visitors and ensure all facilities meet relevant statutory standards and where possible other 'best practice' standards.
- 8.1.9 In accordance with the Reserves General Policies, promote the Smokefree status of the reserves network.
- 8.1.10 In locations where significant numbers of people congregate, such as picnic and swimming areas, consider options to actively provide and enhance shade.

Visitor infrastructure and experience

- 8.1.11 When resources permit, provide:
 - a) Clear and consistent information signage at entrance points and other key locations within the Park to provide visitors with the necessary information to support their visit.

¹⁸ See Appendix 2 for Entrances and specifications

- b) Wayfinding signage at key points within track and trail network containing information regarding permitted mode (bike or foot), distance, duration, difficulty, and required direction of travel as required.
- c) Well distributed easy to access seating with features to support those with limited mobility to enhance visitor experience at suitable higher use locations.

8.1.12 Consider education and interpretation signs about the natural landscape, culture and history of the Park for locations where vandalism is less likely. Any such signs should be developed in conjunction with ngā iwi o te tauihu, technical specialists and community groups.

8.1.13 Park signs to be constructed in durable materials and located to avoid adversely affecting amenity values.

8.1.14 Advertising signage may be approved within the Park subject to written authorisation at the discretion of Council.

Consideration be given to:

- a) Whether signs are permanent or temporary
- b) Size, shape, colour and placement and the effect on amenity values
- c) The financial benefit that accrues to Council, or one of its partners, from the sponsorship sign.

Environmental protection

8.1.15 Responsible environmental management practices by visitors to be promoted through the following actions:

- a) Active use of the 'Environmental Care Code' and 'Tiaki Promise' on Park signage and through other information channels.
- b) Promotion of user responsibility for removal of rubbish through the existing 'pack it in pack it out' approach
- c) Progressive provision of toilets at primary entry points as resources permit

Development

8.1.16 New or replacement facilities and infrastructure be provided only where there is an identified need that enhances public use and enjoyment of the Park.

8.1.17 Any proposed recreational facility development to thoroughly consider any potential effects on flood and river management, safety, resilience to damage and other Park outcome areas.

8.1.18 Where possible, the design and construction of new facilities to retain a rustic/natural design theme that fits within the surrounding landscape.

8.1.19 Legal or nationally accepted best practice standards or guidelines for the development of new tracks and facilities to be followed.¹⁹

8.1.20 Plaques recognising the contribution by individuals or groups towards the development of the Park may be considered at the discretion of Council.

¹⁹ Refer Appendix 2

Picnicking and swimming

Issues

The proximity and value of the river for swimming over the summer months has been highlighted by feedback received. However, water quality and access were identified as limiting factors.

Visitors to the river often combine swimming with picnicking, typically on the riverbed near swimming areas or on nearby grassed spaces where available.

There is a long-standing demand for vehicle access to the riverbed to reach swimming and picnicking areas. To address this practically, it may be appropriate to allow vehicle access in a few locations while restricting it in sensitive areas.



Objective

- 8.2 Popular picnicking swimming locations are accessible, and good information is available about water quality for swimming over the summer months.

Policies

- 8.2.1 Walking access is available to popular swimming areas within the river from vehicle access points.
- 8.2.2 Information regarding water quality for swimming is widely available through a variety of Council channels.

Walking and running

Issues

The primary consideration for walking and running is to ensure a variety of options are available from each Park main entry point, catering to visitors with different abilities, time constraints, and desired experiences.

The other key issues are to ensure that walkers and runners have access to the necessary information and facilities while addressing safety concerns, minimising conflicts with other users, and ensuring there are no adverse impacts on other park outcomes.

Objective

- 8.3 To offer visitors a variety of walking and running options that cater to different skill levels and durations, accessible from various park entry points

Policies

- 8.3.1 Formalise the recreation corridor for walkers and bikes along both sides of the river between the Kidson Bridge (Tasman's Great Taste Trail) and Brightwater utilising:

- a) The stopbank structure (and road between the nursery and Challies Island) on the western side of the river to Waimea West Road
- b) existing track or stopbank and road to the upper Tasman's Great Taste Trail Swingbridge and beyond to Clover Road West on the eastern side of the river and to Bryant Road on the western side.²⁰

8.3.2 Investigate the longer-term feasibility of further extending the recreation corridor by

- a) Formalising a ford over the Wai-iti River at or immediately upstream of the confluence providing a summer connection between the western corridor to the Twin Rivers Walkway, Tasman's Great Taste Trail, Bryant Road and Brightwater.
- b) Extending the route upstream of Bryant Road and/or Clover Road West to the SH6 bridge and beyond.

8.3.3 Formalise/improve walking/running circuits from the following key entry points:

- a) Appleby Reserve – Riverside track to Kidson Bridge and stopbank return
- b) Lower Queen St - carpark to Kidson Bridge, along western riverbank to SH60 bridge and return via western stopbank to bridge and carpark

- c) Challies Island - Riverside track, road and stopbank
- d) Bryant Road and Waimea West Road – Twin Rivers Walkway linking back along Waimea West Road (or offroad through future subdivision land acquisition).²¹

8.3.4 Provide for pedestrian access along all stopbanks.²²

8.3.5 Advocate for dedicated pedestrian/cycling access over SH60 bridge to improve safety and provide improved access.

Biking

Issues

Through the development of Tasman's Great Taste Trail, access for biking has been significantly improved over the past decade. Opportunities now exist to link additional biking connections to the current trail network in place.

E-bikers are now a considerable proportion of bike trail users. Given their faster speeds, additional work is required to maintain sight lines and ensure protocols are followed regarding giving way and warning other users of approaching and overtaking.

Wildlife is also more susceptible to disturbance given these faster speeds.

²⁰ Note: due to river movement, the section of trail past the gravel processing area will be relocated onto the stopbank to maintain this connection

²¹ Note: The eastern bank of the Wai iti River sustained significant damage during the 2025 floods. This section is expected to remain formally closed until access can be safely and fully reinstated

²² This will require management of encroachment by adjacent landowners in places and fencing modifications.

The other key consideration is to ensure that bikers using the Park area appropriately have the information and facilities that they require, and that there is no conflict with other users or adverse effects on other Park operations.



Objective

8.4 To provide a range of biking options for users with different abilities and available time.

Policies

- 8.4.1 For bikes to be permitted on all walking track connections and stopbanks proposed in Section 8.3.
- 8.4.2 To work with the Nelson Cycle Trails Trust to further promote safe and courteous use of bikes within the park including:
 - a) Clear information at entrance points regarding biking safety protocols
 - b) Wider promotion of safe biking practices

8.4.3 If wildlife disturbance becomes a significant issue in the delta or other high natural value areas, consider further screening and speed restrictions if required.

Dog exercising

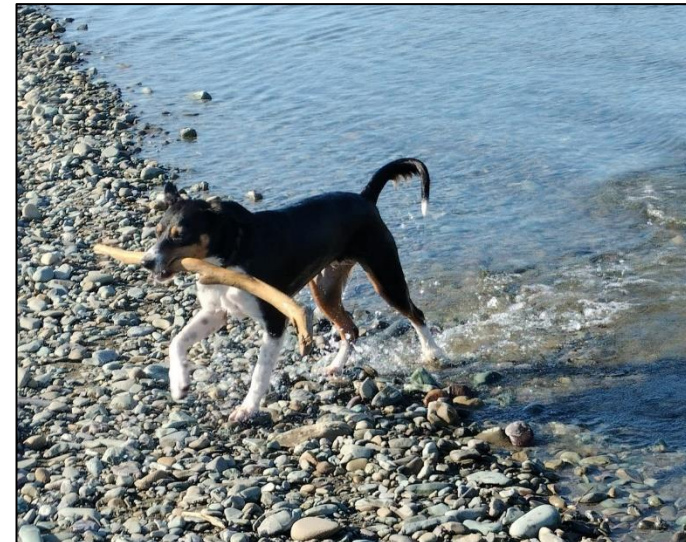
Issues

As described in Section 3, dog ownership in the Tasman District has increased substantially in recent years, leading to higher demand for and usage of parks and open spaces for dog walking.

Uncontrolled dog access can negatively impact native wildlife, through predation, disturbance and increasing stress levels.

It can also impact visitor experience for others.

While recent amendments to the Dog Bylaw have introduced stricter controls for dogs in the delta area primarily to protect wildlife, further expansion of these controls over the wider delta area and other areas necessary should also be considered in the next Dog Bylaw review.



Objective

- 8.5 To ensure dog exercising opportunities are available within the Park and that dogs do not disturb or cause harm to wildlife or adversely affect experience for other visitors.

Policies

- 8.5.1 Promote the operative Dog Control Bylaw as it relates to the Park through:
- a) Information provided on signs and other information channels
 - b) Support for enforcement actions.
- 8.5.2 To actively provide input for future reviews of the Dog Control Bylaw to ensure that all outcome areas of this plan can be achieved. Future changes may include:
- a) Expansion of prohibited areas for dogs in important wildlife habitats²³
 - b) Additional restrictions where conflict may arise with other users or grazing livestock etc.
 - c) Allocation of designated off lead areas for dog exercise.

²³ Note - dog prohibited areas within the 2025 Dog Control Bylaw excludes trained gundogs for gamebird hunting

²⁴ This section excludes ebikes as defined by the Power – assisted Cycles (Declaration Not to be Motor Vehicles) Notice 2013 or any subsequent regulation under the Land Transport Act 1996

Motorised recreational vehicles²⁴

Issues

The popularity of motorised recreational vehicles, such as four-wheel drive vehicles, motorbikes and quad motorbikes, has increased significantly over recent years. This has generated further demand for more locations to be made available to use these vehicles.

It has also created safety and environmental damage issues where they have been used in inappropriate locations around the district.

Access for motorised vehicles is currently largely unrestricted within the Park apart from physical barriers around some picnic areas. The open bed of the river is also accessible for motor vehicle use during periods of normal or low river flows.

This level of access has led to damage in bermland areas, such as the land downstream of the Appleby Reserve, which otherwise holds significant potential for other park objectives.

In certain locations, such as Tasman’s Great Taste Trail off Bryant Road, the growing number of walkers and cyclists makes vehicle access increasingly unsuitable, especially since the swimming holes being accessed are within easy walking distance of vehicle parking locations for most visitors.

As described in Section 3, vehicle use of the riverbed is also widespread, with likely disturbance of threatened wildlife such as black fronted terns and banded dotterels. Vehicles crossing the river can also

damage the riffle zone of the river habitat occupied by torrent fish. Critical Council river monitoring upstream of the SH60 bridge is also vulnerable to riverbed changes caused by vehicles.

Motorised vehicles can however also provide access to locations that might be challenging or impossible for people to access and enjoy in any other way, such as the aged or disabled.

Objectives

- 8.6 A range of sites are available for off-road motorised recreational vehicle use within Tasman Bay
- 8.7 Motorised vehicle use within the Park does not damage park values, infrastructure, river management operations or create safety issues through reckless or dangerous use, or through incompatible co-location with other Park users.²⁵

Policies

- 8.6.1 Formal opportunities for offroad recreational motorised vehicles be considered both within the Park and the wider district
- 8.7.1 Recreational motorised vehicle use off existing developed gravel roads will be actively discouraged from sensitive areas of river margin, riverbed, native habitat areas, river management maintenance routes, and key walking/cycling routes including:
 - a) Tasman's Great Taste Trail
 - b) The crest of the stopbanks along both sides of the Park
 - c) Both sides of the river bermland downstream of the SH60 bridge. (excluding for boat launching and picnicking within and adjacent to the Appleby Reserve)

- d) Upstream of the SH60 bridge for 1 km along the riverbed and bermland
- e) Challies Island and recreation area off developed gravel roads
- f) Twin Rivers walkway from Waimea West Road to Bryant Road
- g) Other areas of riverbed where continued access will endanger populations of threatened species.

Note: Methods to implement this policy include the use of signs, barriers, gates, surveillance and enforcement action and removal of any features created for offroad vehicle activities. The use of nighttime closure for public vehicular access may also be considered.

Horse riding

Issues

Horse riding is a relatively low-impact activity that can be suitable within the Park when conducted in appropriate locations.

The equestrian community continues to express strong interest in establishing horse-riding opportunities within the park, as well as creating broader connections to Moturoa/Rabbit Island and beyond Brightwater.

The 2010 management plan permits horse riding on the eastern side of the river between Lower Queen Street and Clover Road West. However, key infrastructure, such as horse float parking facilities and promotion, has not been implemented.

²⁵ Land Transport Act 1998, Section 7.

Additionally, most of this section of the river margin is used for industrial purposes and features a rough gravel road with vehicle traffic, creating a difficult surface and environment for horse riding.

The 2010 plan also prohibits horses from stopbanks due to the risk of damage and potential conflict with other users. While single-direction travel along the top of the stopbanks may not directly cause damage, several challenges make this option impractical. The adjacent slopes are vulnerable to damage, the narrow pathway leaves little room for two-way traffic or accommodating other users. Controlling access by motorbikes and quads also becomes difficult if access for horses is permitted. Additionally, existing TRMP regulations prohibit heavy stock grazing and access to stopbanks, further complicating any effort to permit horse use on the stopbanks.

When considering suitable areas for horse riding, the provision of spacious parking areas for horse floats is also required - which limits some sites.

Despite these considerations, there are several options to provide for horse riding within the Park, including the use of some existing developed gravel roads and tracks, and the potential development of new trails. Horse riding at higher use areas such as Tasman’s Great Taste Trail, with frequent use by higher speed ebikes are considered incompatible. On identified multiple use trails, well signposted "share the path" protocols can help to ensure safe and enjoyable use for all visitors.

Objective

8.8 Horse riding is enabled to occur at suitable locations within the park, providing a range of opportunities, connections and necessary facilities to support this activity

Policies

8.8.1 Provide for horse riding on multiple use tracks as follows:

Location	Work required
On the western bank south of the Appleby SH60 Bridge to the Wairoa – Wai-iti confluence	<ul style="list-style-type: none"> • Further concept planning for the Challies Island Recreation Area to confirm suitable routes and horse float parking site • Horse float parking area • Further trail development • Shared use protocol signage
On the eastern bank between Bartlett Road and Clover Road West	<ul style="list-style-type: none"> • Exclusion of vehicles • Surface improvements • An adequate area to be provided for horse float parking at either end • Shared use protocol signage
On the eastern bank between Bartlett and Blackbyre Road (currently shared with vehicles)	<ul style="list-style-type: none"> • Surface improvements • Speed limiting features while vehicle access remains available • Shared use protocol signage

8.8.2 Prohibit horse riding:

- a) Downstream of the Appleby bridge on the west bank (including Tasman’s Great Taste Trail and Waimea Delta/Pearl Creek area) and downstream of Lower Queen St on the east bank
- b) On the crest and batters of stopbanks
- c) On the Twin Rivers Track, unless the track can be fully reinstated following the 2025 floods and suitable horse float parking made available at either end of the track

Use of aircraft

Issues

Aircraft use is not a significant activity within the park. However, several hazards exist including network infrastructure overhead wires as well as the Park's proximity to approach paths for Nelson airport.

Although aircraft are used infrequently on adjacent properties and within the Park, the use of drones has become increasingly popular in recent years. While drones offer entertainment and photo opportunities, they also can pose safety risks to other aircraft, grazing stock and detract from the visitor experience.

The Civil Aviation Authority (CAA) is the primary agency responsible for regulating drone use. However, landowner permission is also required. The Council's drone policy provides blanket permission for flying drones over Council land, provided users follow CAA rules and meet standard conditions. Sensitive sites, including land leased to other parties, of which constitutes a significant portion of the Park, are excluded from the policy and require separate approval.

Objective

8.9 Aircraft use within the park is conducted safely, without disturbing wildlife, and respecting the privacy and enjoyment of other park visitors.

Policies

8.9.1 The existing Council policy regarding flying unmanned aircraft over Council land will be followed including the requirement to:

- a) Not fly over other people or adjoining leased Council land without their consent
- b) Be courteous of other park users, who often are there for the quiet enjoyment of the park

- c) Not operate within 20 metres of sensitive wildlife habitats (such as coastal or river margins)
- d) Not operate within 20 metres of nesting or roosting birds (such as godwits, banded rail, black fronted terns, banded dotterel, bittern).

8.9.2 If significant impacts occur to Park values, further adjustment to this policy be sought (such as defining prohibited operating areas).

Use of boats

Issues

The Waimea and lower Wairoa Rivers are navigable waterways, sometimes used by jetboats and occasionally by kayaks and other watercraft during periods of medium and high flows.



Jet skis are also used within the Waimea Inlet and delta, often operating at speed close to shore, resulting in disturbance to wildlife in

this important area. These activities are managed by the Harbourmaster under the Navigation and Safety Bylaw (2024). The Bylaw provides for boat operating speeds within the Waimea and Wairoa Rivers (below the Lee River) to exceed the standard 5 knots within 200m of shore during periods of sufficient flow.²⁶ In addition, Maritime New Zealand rules require boat operators to ensure safe operation and to avoid interfering with others using the river.²⁷

To undertake this activity, access to the river for boat launching is required. Historically, the best launch sites for larger watercraft, such as jetboats, have been located on the riverbed adjacent to the Appleby Reserve.

Maintaining the accessibility of this historical launching site, especially on weekends, could be considered if vehicle access from this area into the wider Park and riverbed can be controlled. If river movement results in this site becoming unsuitable, alternative locations could be identified if compatible with other Park uses. More widespread boat launching along the riverbed should be discouraged, as it can negatively impact other park values.

The Nelson Marlborough branch of Jetboating NZ has traditionally hosted an annual one-day slalom event. This has required a resource consent to undertake temporary digger modifications of the river channel in a localised area as well as cooperation and coordination with the Council Rivers Team and Harbourmaster. If the potential environmental effects of this activity are appropriately managed and resource consent is granted, access should also be permitted.

Objective

- 8.10 Access to the river in suitable locations is available for the launching and retrieving of boats and other watercraft.

Policies

- 8.10.1 Vehicle access to the river for the launching and retrieval of boats is provided for from the Appleby Recreation Reserve.
- 8.10.2 Infrequent jetboat slalom events to be permitted, provided that the necessary resource consents are secured and any potential negative effects on park values and users are deemed acceptable.
- 8.10.3 To seek increased enforcement of existing speed restrictions for jet ski operation within the Waimea Inlet adjoining the delta, and to consider wider statutory controls if necessary.

²⁶ River flow at the Wairoa River (Irvines) exceeds 20 cumecs. (Schedule 2, Navigation and Safety Bylaw 2024) <https://www.tasman.govt.nz/my-region/environmental/environmental-data/river-flow>

²⁷ Section 26.3, Navigation and Safety Bylaw 2024

Gamebird hunting



Issues

Upland gamebird²⁸ and waterfowl²⁹ hunting, as well as related activities such as gun-dog trialling, have traditionally been popular seasonal activities in the Park during the winter months.

However, the increased public use of areas such as Challies Island, Tasman's Great Taste Trail, Two Rivers Walkway and parts of the lower river and delta, has made these locations less appealing to hunters due to greater bird disturbance and heightened public safety concerns.

Lower-use areas of the park, such as between the Wai-iti and Wairoa confluence and Challies Island, still offer some opportunities for game bird hunting. However, visitor activity in these areas is expected to increase over time in the future.

Nelson Marlborough Fish and Game Council (Fish and Game) have expressed interest in working with the Council, Iwi, and the Waimea

²⁸ Pheasants and Californian Quail

²⁹ Grey Duck, Mallard Duck, Shoveler

Aggregate Users Group to create a new wetland through future gravel extraction.

Located in a low-use area of the park, this wetland could support managed game bird hunting and breeding while also providing essential habitat for rare species like the Matuku hūrepo (Australasian bittern).³⁰

Hunting can conflict with other recreational activities and raise safety concerns. However, the season for the most sought-after game birds in this area—pheasants and California quail—is restricted to just three weekends in June and July. Additionally, other game bird hunting, including ducks and waterfowl, is primarily concentrated in May during the winter season.

During the preparation of this management plan, feedback was divided between those supporting continued hunting and calling for greater restrictions. Fish and Game reported receiving no public complaints about game bird hunting within the Park under the existing plan. Additionally, hunters have voluntarily avoided high public-use areas of the Park to meet their safety obligations under New Zealand's firearms law.

Objective

8.11 To provide for gamebird hunting in the Park in a way that minimises wildlife disturbance and safety risks to other park users.

Policies

8.11.1 For Nelson/Marlborough Fish and Game to continue to provide management oversight for gamebird hunting within the park.

8.11.2 Council staff consult Fish and Game before each hunting

³⁰ A 2023 survey for Matuku/Bittern in Northland found them present in 4 out of 5 Fish and Game constructed wetlands developed for gamebird habitat and hunting

season regarding

- a) expected use of the Park over the season to ensure hunters receive advice on suitable areas to hunt and members of the public made aware of this hunting activity occurring.
- b) the option of several weekend closures of specific areas if justified and minimal disruption of other activities is likely

8.11.3 To ensure hunters obtain permission from lessees prior to hunting on land leased for grazing or other uses.

8.11.4 To work with Fish and Game, Iwi and the community, to explore future wetland development options to enhance gamebird hunting opportunities

Fishing



Issues

Freshwater fishing is a major recreational activity with over 6,500 licence holders in the Nelson Marlborough Fish & Game region. It contributes to physical activity, promotes well-being and brings economic benefits to the community. The Park is an important and well used³¹ fishing resource offering fishing opportunities that are highly accessible and close to the Nelson Richmond urban area. Trout fishing occurs along the entire length of the river within the Park.

The Sports Fishing For Youth Charitable Trust, in collaboration with Fish and Game, has been instrumental in developing and now stocking the

³¹ The 2021/22 National Angler Survey undertaken by NIWA for Fish and Game NZ placed the fishing ponds and river in 6th and 7th in popularity within the Nelson Marlborough Region

ponds. These ponds have become a valuable resource for promoting and developing sport fishing in the region. Continued support is important, while also ensuring the wider Challies Island area and wetlands are also managed to achieve other key objectives for the Park.

While Fish and Game is responsible for managing the introduced sports fishery, the Council, as the landowner, can support broader efforts to enhance water quality and river habitats. This can be achieved by reducing runoff and sedimentation through effective river management and riparian restoration planting.

The Waimea Community Dam is expected to improve fish habitats by releasing minimum flows of oxygenated water back into the river, particularly during the summer months.

Clearly marking river access points for fishing and other activities, along with restricting vehicle access into the riverbed, can help further protect and enhance fishing opportunities.

Whitebaiting, eeling and mullet fishing also occur towards the river mouth. These fisheries are managed by the Department of Conservation and the Ministry of Primary Industries respectively.

Over time, informal four-wheel drive and quad motorbike tracks have been created in this area, often to reach fishing sites. Any further expansion and proliferation of these tracks may hinder future habitat restoration efforts.

Objective

- 8.12 Trout fishing continues to be supported by maintaining access to the existing fishing ponds and the river and pursuing actions aimed at improving the quality of the river habitat.
- 8.13 Access to sites for whitebaiting, eeling and mullet fishing is provided in a way that protects other Park values.

Policies

- 8.12.1 Continue to support the Sports Fishing For Youth Charitable Trust, Fish and Game NZ (and any other relevant organisation) in the operation of the fishing ponds through:
 - a) Provision of a licence to occupy
 - b) Inclusion and integration of the existing trout fishing at the ponds in further wider development planning for the Challies Island area
 - c) Support for minor improvements and operations where this does not affect other park values.
- 8.13.1 Access to sites for whitebaiting and eeling continues to be provided for subject to:
 - a) Control of access by vehicles where this may threaten other park values
 - b) Changes or restrictions on fishing rules

Camping and overnight stays



Issues

Freedom camping has long been a challenge for the district. Historically, house buses and vans would informally camp at the Appleby Reserve. More recently, small numbers of vehicles have used less frequented, vehicle-accessible parts of the Park, particularly during summer.

While this hasn't caused major issues so far, it's likely that many vehicles are not self-contained, raising concerns about rubbish or effluent being left behind.

The recently amended Freedom Camping Act (2011) allows tent camping and self-contained vehicles within local authority areas unless prohibited by a bylaw. The Council's 2017 Freedom Camping Bylaw does not restrict freedom camping within the Park.

The Act allows for infringement offenses for damage to flora, fauna, and structures, as well as for depositing waste. However, obtaining evidence

that identifies the specific offender is often difficult.

Because significant areas of the park can be subject to flooding, overnight camping is not formally provided for in the Plan. If safety issues, damage or negative impacts on other users or neighbouring properties become significant, restrictions or prohibitions in the next review of the Freedom Camping Bylaw may be required.

Objective

- 8.14 That the focus for community use and enjoyment of the Park be on day visitors.

Policies

- 8.14.1 Provision is not made for camping and overnight stays within the Park.
- 8.14.2 To consider restrictions or prohibitions under the Freedom Camping bylaw if safety issues, damage or negative effects on other users or adjoining land uses become significant in the future.

9. Ngā mahi arumoni / Commercial activities

Gravel extraction and processing



Issues

The river and its bermlands serve as an important, centrally located aggregate resource for the Nelson Tasman region.

Gravel extraction companies project a significant shortfall in gravel supply over the next 30 years due to anticipated population growth and the associated housing developments outlined in the Future Development Strategy (2022–2052).

While substantial gravel resources may exist in the wider region,³² their quality and cost-effectiveness for extraction and processing remain untested.

Gravel resources within the Park play a valuable role. However, concerns exist regarding the ‘industrialisation’ of the Park and the

compatibility of gravel extraction and processing with other Park values, and the potential downstream risks to the Waimea Inlet.

Gravel extraction within the active riverbed is an important tool in river management and flood control. This activity will continue under the direction of the Council Rivers team and in compliance with the TRMP requirements.

In contrast, land-based gravel extraction within the bermlands is discretionary and represents a finite resource. While it has provided valuable aggregate materials for many years, some historical extraction sites were backfilled with inappropriate materials and poorly reinstated surface layers. This has limited their potential for future uses, such as forest restoration or intensive grazing.

More recently, through the current TRMP processes and more active direction by the Council as landowner, gravel extraction sites are being designed to ensure environmental enhancements post-extraction. A notable example is the creation of a planted wetland ecosystem, which is currently progressing at Challies Island.

Gravel processing also takes place within the Park and stopbanks. While this proximity to extraction sites offers operational efficiencies, it also creates vulnerabilities to flood events. These include potential flood damage to onsite equipment and facilities, as well as the mobilisation of stockpiled materials or debris, which could cause significant harm to downstream areas and the Waimea Inlet. Given the projections for more frequent and severe flood events—and the fact that gravel processing does not need to occur on the bermlands between the stopbanks—it is essential to demonstrate that these risks can be effectively mitigated for gravel processing to continue in these locations.

³² GNS Science (2024)

As noted, high-quality gravel within the Park is currently in limited supply. Given this constraint, it is crucial to implement a robust gravel allocation process to prioritise sufficient resources for key 'public good' purposes, such as roading and other infrastructure. Additionally, lease and gravel extraction charges should reflect the market value of this finite resource. An opportunity also exists for funding generated from gravel extraction to be directed back towards Park enhancement activities.

Objectives

- 9.1 Gravel resources continue to be available from within the Park while ensuring direct net enhancement of other park values following extraction.
- 9.2 The presence of aggregate processing plants and stockpiles does not present an unacceptable risk to the environment, including the Waimea Inlet, during flood events.

Policies

- 9.1.1 Provide for gravel extraction within the active riverbed for river management and flood control, under the direction of the Council Rivers team and in accordance with TRMP requirements.
- 9.1.2 Provide for land-based gravel extraction within the bermlands subject to:
 - a) Identification of suitable remaining areas for extraction
 - b) Effective management of potential adverse effects on the environment and other park values
 - c) An improvement to the area, such as wetland creation, following the conclusion of extraction

- 9.2.1 For existing gravel processing to be transitioned out of the Park upon lease renewal, and no new processing areas be approved, unless downstream environmental risks from flooding events can be adequately mitigated.
- 9.2.2 The Council will work with gravel extraction and processing operators to minimise adverse impacts on other Park values and activities, which is expected to include the following:
 - a) Developing clear performance criteria that will guide future lease renewals
 - b) Prohibiting the stockpiling of any Class 4³³ materials within the stopbank area, or the stockpiling of imported soil, woody debris, road trimmings, etc. without appropriate management controls including limited duration, compliance reporting, and sedimentation controls
 - c) Providing suitable width buffer strips where possible to reduce cross boundary effects to the riverbed and stopbanks
 - d) Maintaining access for walkers and cyclists to stopbanks outside of leased areas and limiting public access closure periods to shared use operational areas and providing alternative accessways where possible.
- 9.2.3 Review the policy and methodology for gravel allocation and for calculating fees and charges.

³³ Technical Guidelines for Disposal to Land (2022)

Agriculture and horticulture



Issues

Large areas of the park are currently leased to long-standing lessees for grazing purposes. This land use serves as an important management tool, helping to control weeds, reduce fire hazards, and maintain vegetation over vulnerable soils and gravel areas. It also ensures the floodway remains relatively free of obstructions or vulnerable assets while generating a revenue stream.

Since the 2010 plan, several existing lessees have shown interest in using the land leased for grazing for other purposes. This has resulted in one unauthorised vineyard extension, enquiries about further vineyard expansion, and a seasonal trial of arable crops in another location. Land uses involving higher levels of investment and infrastructure, such as intensive fencing, are more susceptible to flood

damage and result in greater pressure to contain natural river movement.

Additionally, arable farming is more vulnerable to soil erosion during floods, especially during the crop establishment phase.

Current leases include provisions allowing the Council to cancel leases, in whole or in part, on short notice.³⁴ These clauses provide the flexibility needed for the Council Rivers team to perform river and flood management activities when required. Future grazing lease renewals should maintain these provisions to ensure continued adaptability.

Community and iwi feedback highlighted the importance of ensuring that grazing on Council-owned land adheres to best practices, remains sustainable, and avoids adverse effects on the river and other park values. Key actions, such as managing nitrate levels and controlling stock access to waterways, will be addressed through Freshwater Farm Plans currently required under the 2023 Resource Management Act freshwater management reforms. Additional concerns, such as encroachment beyond lease boundaries and the need for adequate buffers around critical infrastructure—such as stopbanks, monitoring sites and bores—can be managed through lease conditions and ongoing collaboration with the Council Property and Rivers teams.

Objectives

- 9.3 Pastoral grazing serves as an effective management tool, supporting the Council in achieving effective flood management and other Park outcomes.
- 9.4 Other agricultural and horticultural activities that do not positively contribute towards these objectives are not provided for.

³⁴ Usually, 3-6 months' notice or immediately in an emergency

Policies

- 9.3.1 Continue to provide for pastoral grazing in Park locations where this serves an important management function.
- 9.3.2 Investigate the opportunity to retire pastoral grazing areas into native habitat areas as lease terms and available Park management funds allow.
- 9.3.3 Ensure new leases include adequate buffers around riparian areas, monitoring sites, and bores, can be cancelled at short notice and that the lease agreement is directly with the farmer rather than informally sublet.
- 9.3.4 Work with lessees to ensure best practice farming on Council land including:
 - a) Development of meaningful and practical Farm Plans³⁵ or equivalent ‘best practice’ environmental management practices linked to lease conditions, including active measures to limit nitrate and stock access to waterways.
 - b) Implementing operating practices to prevent the use of stopbanks for stock movement and the removal of barriers to public access
 - c) Taking other actions as necessary to ensure that farming operations integrate well within the wider management context
- 9.4.1 Other capital-intensive horticultural land uses such as vineyards or orchards, that do not contribute positively to flood management and other Park outcomes will not be permitted.³⁶
- 9.4.2 Arable farming with appropriate soil management plans and monitoring and reporting requirements, may be permitted by

exception and at Council’s sole discretion.

Recreation concessions

Issues

Recreation concessions have the potential to further enhance the use and enjoyment of the park. To date, there has been limited commercial activity in the park, with businesses such as paintball operators, and cycling tour providers utilising Tasman’s Great Taste Trail. Provided that proposed commercial uses do not negatively impact river and flood management or other park management objectives, such opportunities should be actively encouraged.



³⁵ Or an equivalent informal plan if the farm is under 20 hectares

³⁶ Including transitioning existing uses from the Park

Objective

9.5 Recreation concessions compatible park objectives are encouraged to create further valuable opportunities for the community.

Policies

9.5.1 Permit new commercial recreation activities in the park, provided such activities:

- a) do not require installation of high value or permanent structures and other assets
- b) do not require exclusive use of land that is publicly used
- c) are compatible with other park management objectives.

10. Te tūāhanga / Infrastructure

Issues

In addition to river management assets like stopbanks, rock protection, and erosion control plantings, the park also requires various infrastructure assets to support its activities.

These include buildings, structures, fencing, and roads. Due to the park's susceptibility to occasional flooding, infrastructure should be limited to essential assets to support park outcomes and designed to withstand flood events through strategic location and resilient construction.

The park also contains districtwide network infrastructure, including state highway bridges, overhead transmission lines, water supply intakes and pipelines, river and groundwater monitoring sites/bores, and a plant nursery. Park activities must be carefully planned and executed to prevent disruptions to the functioning of these assets and ensure unimpeded access for essential maintenance and operations.

Any proposed new network infrastructure should be evaluated based on its criticality/importance to be located within the Park and potential impact on other park objectives.

Objectives

- 10.1 Park infrastructure is restricted to assets essential for achieving park outcomes and is designed to be resilient to flood events.
- 10.2 The effective operation and access to network infrastructure is not disrupted by park activities, nor should network infrastructure unduly limit the achievement of other Park objectives.

Policies

- 10.1.1 Park infrastructure will be provided as needed to achieve the park objectives and designed and operated to be:
 - a) Located away from high flood risk areas
 - b) Resilient to damage or be low value allowing easy reinstatement after a flood event
 - c) Regularly assessed for condition and actively maintained
- 10.2.1 Park management activities and public use will be managed to ensure they do not compromise the operation, or access to network infrastructure by network operators.³⁷
- 10.2.2 New network infrastructure will be considered on a case-by-case basis with attention to:
 - a) The criticality of the asset to be located within the Park
 - b) The potential effects of park activities on the infrastructure and any resulting limitations on park activities
 - c) The extent of overall public benefit from the new infrastructure

³⁷ Including Tasman District Council Environmental monitoring and water supply assets

Part E – How will we get there?

11. Kaitiakitanga /Guardianship

Issues

As described in Part C, ngā iwi e waru o Te Taihū, the eight 'top of the south' iwi, have a deep cultural connection to the Waimea/Waimeha River and its wider catchment. This relationship is formally recognised through the Statutory Acknowledgements³⁸ and the Te Taihū Partnership Agreement.

The management of the Park has the potential to negatively impact the mauri of the river as well as mahinga kai, and sites of significance.

Despite their strong cultural association with the area, ngā iwi have had little opportunity to participate in decision making regarding this Council controlled land adjacent to the river, which may affect these values.

Objective

- 11.1 Ngā iwi are able to exercise kaitiakitanga over the river and surrounding margins.

Policies

- 11.1.1 Strive to ensure that environmental management policies and management activities for the Park enhance the mana, mauri and wairua of the river.
- 11.1.2 Enable Te Taihū iwi to participate in any further planning or review of progress being made towards achieving the Plan objectives, and to seek further management guidance.

- 11.1.3 Ensure that any information signs installed, or other communication channels, include messaging about the park's cultural and historical significance.
- 11.1.4 Implement iwi cultural health indicator monitoring (CHI) to track progress towards the plan's goals and objectives and assess impacts on cultural health and associated values.

12. Te mahi ngātahi / Working together

Issues

Historically the land comprising the Park was managed solely for the purposes of river management and flood control, with little participation by iwi or the wider community. Growing interest in recognising and supporting other outcomes for the river and surrounding areas led to the development of the Waimea/Waimeha River Park concept and its inaugural plan in 2010.

Feedback highlights further strong iwi and community interest in participation in Park development activities including planting and restoring native habitats as well as further developing recreational opportunities.

Objective

- 12.1 The Council, iwi, lessees and the community work together in the management of the Park.

³⁸ Te Taihū Treaty Settlements 2014

Policies

- 12.1.1 Provide opportunities and support initiatives for community participation in the implementation of Plan actions.
- 12.1.2 Partner with iwi and engage with the wider community before considering significant changes that may affect Park values.
- 12.1.3 Review communication channels to ensure meaningful information flow between the Council and the community and provide opportunities for feedback.

13. Te whakamahere / Planning

Issues

Given the diverse outcomes that the park is managed for, alongside the overriding priorities of effective river management, soil conservation and water quality, a clear framework for daily and future management is critical to achieving objectives.

This plan builds on the 2010 plan to reflect current circumstances and address current and future challenges and opportunities and establish a vital link to the LTP.

Work programmes focused on achieving identified objectives must also be established and informed by comprehensive information and necessary data.

Limited funding also must be managed efficiently to maximise outcomes for the park. Revenue generated from activities within the Park, especially those with negative impacts, should be directed towards offsetting these effects by supporting restoration efforts.

Additionally, opportunities for third-party funding, such as central Government initiatives, grants, sponsorships and benefactors should also be actively pursued.

Objective

- 13.1 An effective planning framework is in place with clear direction for management that is practical and able to be implemented.

Policies

- 13.1.1 Undertake a risk assessment as part of project planning for new activities, to ensure Park values are not threatened.
- 13.1.2 Utilise existing environmental health monitoring and undertake iwi cultural health monitoring to assess changes, evaluate the success of completed work and identify areas of the plan requiring further effort.
- 13.1.3 Develop and utilise matauranga Māori where applicable to support Plan implementation.
- 13.1.4 Maintain an up-to-date inventory of key park assets and conduct regular condition and performance assessments to inform asset management planning.
- 13.1.5 Ensure the objectives and policies of this management plan are considered during the development of other Council plans, including Activity Management Plans, Annual Plan and the LTP.
- 13.1.6 Encourage other statutory processes such as those under the TRMP to consider the objectives and policies of this plan.
- 13.1.7 Review the Park management plan every ten years or sooner as required.

14. Te reretahi / Coordination

Issues

Different Council departments have varying responsibilities for park functions, which has occasionally led to management gaps or conflicts between work programs. While these issues are currently addressed through informal meetings, establishing regular, formal coordination meetings—particularly before annual work programs are finalised and implemented—could improve coordination and oversight.

Objective

14.1 Effective operational coordination of the delivery of key actions within the Park.

Policies

- 14.1.1 Formalise a Council staff group to coordinate necessary actions to implement the Plan.
- 14.1.2 Ensure that future work programme activities and development within the Park focus on activities required to implement Plan objectives and policies.

15. Park legal status, land acquisition, leasing and licences

Issues

Most parcels within the park owned by the Council are not formally protected but are held in freehold title for river control and soil conservation purposes. Seven smaller areas are protected under the Reserves Act 1977, six classified as Local Purpose Reserve (esplanade) and one part of a Recreation Reserve. Additionally, part of the Pearl Creek land is legally protected by a Queen Elizabeth II (QEII) Open Space Covenant.

As noted in Section 4, further actions are required to pursue Nature

Reserve status for the delta area and to legally protect the land used for the Waimea Community Dam mitigation planting.

Given the primary flood management purposes for the majority of the other land on the margins of the river, no further changes to its legal status of the land are considered necessary. This approach ensures that Council retains flexibility and can implement various elements of this plan as Council policy.

While most of the outcomes sought for the park can be achieved with the current land owned and managed by Council, opportunities for future acquisition exist. These acquisitions could enhance the functionality of the existing area, provide buffers to mitigate cross boundary effects or increase environmental values and resilience by connecting areas of ecological value. Desired land should be identified and pursued as resources allow or acquired through subdivision of adjoining land. If deemed important, a 'right of first refusal agreement' could also be considered.

In some locations, the adjacent landowner has extended activities into the Park. It is important that any significant encroachment is addressed for the land to continue be available to further park objectives and benefit the community.

Some activities within the park are best delivered by third parties through leases or licenses. Given the primary purpose of flood management and soil conservation, as outlined in Section 9, these leases include clauses allowing the Council to retake management control of leased land on short notice if required for these purposes. Retaining this flexibility is essential for the Council.

Access rights and obligations for lessees between different leased areas of the Park, or between land leased and owned by the lessee are currently poorly defined. These should be formalised either through identified non-exclusive area clauses included within the lease, or through a right of way agreement as appropriate.

Objective

15.1 For the legal status of the land comprising the Park to be suitable to achieve Plan objectives and outcomes

Policies

15.1.1 Consider strategic land acquisitions where this supports plan objectives and that these are actively pursued by purchase or by entering 'Right of First Refusal' agreements.

15.1.2 Ensure leases, licences and other statutory instruments adequately:

- a) Reflect the purpose and permitted use of the activity
- b) Are directly with the party undertaking the activity
- c) Provide reasonable rights and obligations including sufficient security of tenure
- d) Ensure flexibility for the Council to access the land if required for essential river control and flood management purposes.
- e) Include rights and obligations for land used by the lessee as access to the leased area
- f) Provide for closure of access to the Park and river for safety or other operational reasons but that these periods be minimised and that, if possible, alternative access points be provided
- g) Require any statutory obligations to be complied with including any plant and animal pest control as required by the RPMP.

15.1.3 Actively monitor and respond to Park encroachment as it arises by:

- a) Giving notice to the party requesting removal of any encroachment and the reinstatement of the area to the satisfaction of the Council within a specified period at the owners' cost
- b) Where removal and reinstatement does not occur, then the Council undertake this work and seek to recover costs.

16. Compliance and enforcement

Issues

The Waimea/Waimeha River Park has a long history of behaviours by some visitors that have negatively impacted other users and the environment.

Vandalism, dumping of cars, household rubbish, contaminants, and lighting fires have been recurring issues over many years. These problems are common in similar areas nationwide that are easily accessible from urban centres, lack informal surveillance, and are perceived by some as wastelands or low-value areas.

Off-road vehicle users, including motorbikes, quad bikes, and four-wheel drives, have bypassed bollards, removed gates and fences, and damaged grass areas and plantings. Others also extensively utilise the riverbed, threatening habitats for native species.

These behaviours may partly stem from the increasing ownership of off-road vehicles and a lack of designated local areas for such activities but also demonstrate a distinct lack of respect and regard for these public spaces.

Although the Plan is a non-statutory document, the compliance provisions of the TRMP regarding discharges, along with several other Council bylaws, provide tools for enforcing some Plan objectives. The Litter Act (1979) also outlines offences for littering and provides

enforcement powers to warranted officers. Existing bylaws can be modified at their scheduled review or replaced earlier if necessary. New bylaws can also be created if wider enforcement coverage is required to implement Plan objectives.

Given the involvement of several Council teams in managing the Park, and the variety of enforcement tools available, there has been a level of ambiguity about how to respond to different incidents and the best approach to resourcing compliance and law enforcement efforts.

A multi-faceted approach is required to reduce compliance issues and to ensure as far as possible that Park objectives and outcomes are achieved. Key strategies include:

- Educating visitors and providing information about the reasons for management policies and the environmental and social consequences of their actions.
- Offering suitable alternative locations for recreational activities that are incompatible at some sites.
- Protecting important areas with barriers and considering restrictions on primary vehicle access roads at night.

16.1.1 Developing and maintaining key sites to a high standard to foster a greater sense of value and respect.

- Reducing the appeal of sites to inappropriate behaviours by promptly removing dumped materials, repairing vandalism or graffiti, and eliminating vehicle-related features such as jumps or bogs.
- Increasing formal and informal surveillance through encouraging increased visitor use, technology, and prompt enforcement response when necessary.
- Persisting with enforcement actions through the transition period for changes in management approach.

Objective

16.1 For sensible and practical management policies for the Park, including provision for a variety of compatible uses, to be accepted and complied with by visitors.

Policies

- 16.1.2 Provide targeted information through a variety of communication channels to explain the purpose and benefits of management policies and the consequences of inappropriate actions on the environment and other users.
- 16.1.3 Actively develop and manage sites as identified within the Plan and promptly respond to inappropriate behaviours including:
- a) removal of dumped material
 - b) repair of vandalism or graffiti
 - c) removal of features built for offroad vehicle use if not a designated area
- 16.1.4 Manage use restrictions as identified using barriers as appropriate and consider closing primary vehicle access roads at night if warranted by significant ongoing issues.
- 16.1.5 Encourage increased visitor use and consider options to increase visibility of sites to increase informal surveillance.
- 16.1.6 Install formal surveillance equipment where necessary and undertake prompt enforcement action.

Part F – Actions

Input areas	Action	Priority
<p>Kaitiakitanga</p> <p>11.1.1-3</p>	<p>Provide for iwi to exercise kaitiakitanga over the river and wider catchment through:</p> <ul style="list-style-type: none"> • Implementing environmental management policies and management activities for the Park that enhance the mana, mauri and wairua of the river. • Enabling Iwi to participate in any further planning or review of progress being made towards achieving the Plan objectives, and to seek further management guidance. • Ensuring that any information signs installed, or other communication channels, include messaging about the park's cultural and historical significance. 	<p>High</p>
<p>Te mahi tahi / Working together</p> <p>12.1.1-3</p>	<p>Provide opportunities and support initiatives for community participation in the implementation of Plan actions.</p> <p>Partner with Iwi and engage with the wider community before making decisions that may affect Park values.</p> <p>Review communication channels to ensure meaningful information flow between the Council and the community and provide opportunities for feedback.</p>	<p>High</p>
<p>Te mahi hoahoa / Planning</p> <p>13.1.1-7</p>	<p>Undertake a risk assessment as part of project planning for new activities, to ensure Park values are not threatened.</p> <p>Utilise existing environmental health monitoring and undertake iwi cultural health monitoring to assess changes, evaluate the success of completed work and identify areas of the plan requiring further effort.</p> <p>Develop and utilise matauranga Māori where applicable to support Plan implementation.</p> <p>Maintain an up-to-date inventory of key park assets and conduct regular condition and performance assessments to inform asset management planning.</p>	<p>High</p>

Input areas	Action	Priority
	<p>Ensure the objectives and policies of this management plan are considered during the development of other Council plans, including Activity Management Plans, Annual Plan and the LTP.</p> <p>Encourage other statutory processes such as those under the TRMP to give consider the objectives and policies of this plan.</p> <p>Review the Park management plan no less than every ten years or sooner as required.</p>	
<i>Te reretahi / Coordination</i>	<p>Formalise a Council staff group to coordinate necessary actions to implement the Plan.</p> <p>Ensure that future work programme activities and development within the Park focus on activities required to implement Plan objectives and policies.</p>	High

Outcome areas	Action	Priority
<p><i>Flood management, soil conservation and water quality</i></p> <p><i>1.1.1-3</i></p>	<p><u>Planning</u></p> <p>Ensure the Rivers Asset Management Plan and river operations consider levels of service opportunities to:</p> <ul style="list-style-type: none"> • Provide for natural river movement and the maintenance of river features such as meanders and pools. • Utilise planting and other green engineering methods over hard engineering solutions where appropriate. • Undertake trials for river control methods that show promise but have not been widely used in the region such as new ecologically friendly bank stabilisation methods. • Retire bermland into long-term uses with enduring environmental benefit and low ongoing maintenance costs, such as floodplain wetlands and native plantings. 	High

Outcome areas	Action	Priority
1.1.4, 1.2.1-3 2.1.1 2.1.3 5.1.3	<p><u>Operations</u></p> <p>Manage bermland activities to those that do not exacerbate flood impacts, increase soil degradation and sedimentation including:</p> <ul style="list-style-type: none"> • Prevent significant investment or development of new assets in the Park that may create greater obligation for a 'defensive' approach to river management. • Prohibit activities within the park that involve, assets or other contaminant sources that are likely to be mobilised or contribute to poor water quality during flooding events without robust environmental management plans. • Provide for development that is likely to be resilient and not impede regular flood flows • Limit the use and timing of heavy machinery and vehicle operation within the riverbed to minimise disturbance to aquatic fauna, riverbed birds and other wildlife. • Where practical and effective, employ native plants to support bank stabilisation and erosion control works to provide additional biodiversity and enhanced amenity values. If willows or poplars are used, ensure that these are sterile and not easily propagated. 	High
2.1.2	Develop and maintain planted riparian buffer strips wherever contaminant runoff may harm water quality. Where appropriate, include this requirement in lease or licence agreements.	Medium
2.1.4	Review the existing risk status for leachate and mobilisation of materials from the ex-Waimea County Council landfill contaminating the delta wetland and estuary.	High
2.1.4	Undertake risk assessments for the other four HAIL sites within the park and take appropriate action necessary to mitigate significant risks which may include: <ul style="list-style-type: none"> • Increasing the groundwater monitoring regime • Taking appropriate steps to further secure or remove rubbish 	Medium
<p>Species and Habitat Restoration Invasive Species control</p> 3.1.3	<p><u>Planning</u></p> <p>Ensure that opportunities to enhance the habitats of threatened and taonga species within the park are considered in the development and prioritisation of habitat restoration programmes.</p>	High

Outcome areas	Action	Priority
<p>4.1.1</p> <p>6.1.2</p>	<p>Ensure habitat enhancement programmes seek to enhance the mauri and traditional kai and other resources (such as tuna, īnanga and harakeke) and provide for cultural harvest</p> <p>In conjunction with iwi and other partners, develop an ongoing native habitat restoration work programme with the objective of restoring:</p> <ul style="list-style-type: none"> • alluvial podocarp forest, native riparian margins and wildlife corridors and connections at priority locations • wetland environments at priority locations including sequencing of various salinities taking into account effects of sea level rise • freshwater fish habitat, including īnanga spawning sites, shade and removal of any remaining fish passage barriers • gravel riverbed habitat 	
<p>4.1.4</p>	<p>Undertake further planning for the Challies Island area to better identify and integrate the native habitat, trout fishing and recreation objectives and actions required for the entire area.</p>	<p>High</p>
<p>3.1.1</p> <p>3.1.4</p> <p>5.1.1</p> <p>5.1.4</p> <p>6.1.2</p>	<p><u>Operations</u></p> <p>Liaise with and support other agencies, groups, individuals and iwi in threatened species protection work within the Park</p> <p>Undertake targeted invasive species control where necessary to protect natural values or public enjoyment and use of the Park and adjacent Waimea Inlet and meet statutory obligations as required by the RPMP</p> <p>If weed spread from the river into the delta and Waimea Inlet is causing significant harm to natural values, and it is feasible, that targeted weed control should be considered to reduce the river’s role as a vector.</p> <p>Ensure habitat enhancement programmes seek to enhance traditional kai and other resources (such as tuna, īnanga and harakeke) and provide for cultural harvest</p> <p>Limit locations and the time of year that vehicles can access priority areas of the riverbed that are important habitats for threatened and taonga species.</p>	<p>High</p>

Outcome areas	Action	Priority
3.1.5, 3.1.6 4.1.6 11.1.4	<p><u>Monitoring</u></p> <p>Undertake or support monitoring of key threatened and indicator species and habitats and use this information to guide Park management.</p> <p>For threatened and taonga species and habitats to be included in iwi cultural health indicator monitoring (CHI).</p>	Medium
<p>Cultural heritage protection</p> 6.1.3-5	<p>Reduce the risk of damaging wāhi tapu and/or other cultural values through engagement with iwi to determine appropriate mitigation.</p> <p>Consider carrying out archaeological assessment prior to proposed land disturbance activities that could affect important cultural sites or values.</p> <p>Provide for iwi monitoring during significant works including adherence with accidental discovery protocols.</p>	High
6.2.1	<p>Consider providing information signage and/or Pou whenua or waharoa at significant sites where the risk of vandalism is low and where this increases community understanding and protection of cultural heritage</p>	Low
<p>Landscape Protection</p> 7.1.1	<p>Activities that may adversely affect the visual amenity of Park features are controlled to limit effects</p>	Medium
7.1.2	<p>Where possible, river and riparian management will seek to maintain and enhance the natural gravel riverbed environment</p>	Medium
<p>Community use and enjoyment</p> 8.5.2	<p><u>Planning</u></p> <p>To actively provide input to future reviews of the Dog Control Bylaw to ensure that all outcome areas of this plan can be achieved. Future changes may include:</p> <ul style="list-style-type: none"> • Expansion of prohibited areas for dogs in important wildlife habitats • Additional restrictions where conflict may arise with other users or grazing livestock etc. 	Medium

Outcome areas	Action	Priority
	Allocation of designated off lead areas for dog exercise	
<p>8.1.5</p> <p>8.1.18-21</p> <p>10.1.1</p>	<p><u>Development</u></p> <p>Capital development of Park facilities and infrastructure is undertaken considering:</p> <ul style="list-style-type: none"> • Whether there is an identified need • Any potential effects on flood and river management, safety and other Park outcome areas • Construction in durable materials to withstand floods and potential vandalism and be located to reduce flood risk and detract from amenity values. • Design and construction that fits within the surrounding landscape. • Ensuring legal or nationally accepted best practice standards or guidelines for the development of new tracks and facilities are followed • Accessible for people with limited mobility. • In locations where significant numbers of people congregate, such as picnic and swimming areas, consider options to actively provide and enhance shade 	<p>High</p>
8.1.3	Progressively improve park entrances to meet Plan standards	<p>Medium</p>
8.1.11	Progressively install direction/wayfinding signs at key intersections within the Park	<p>Medium</p>
8.1.15	Consider installing easy to access seating with features to support those with limited mobility at suitable higher use locations where vandalism is less likely	<p>Low</p>
8.1.12	Consider installing education and interpretation signs about the natural landscape, culture and history of the area in locations where vandalism is less likely	<p>Low</p>

Outcome areas	Action	Priority
<p>8.1.4</p> <p>8.1.7</p> <p>8.1.8</p> <p>8.1.14</p> <p>8.1.16</p> <p>8.1.21</p>	<p><u>Operations</u></p> <p>As a default, manage all areas of the Park to remain available for public use unless restrictions are required to ensure safety, prevent adverse impacts or to enable approved river management or commercial operations to be undertaken.</p> <p>Manage safety risks for visitors and ensure all facilities meet relevant statutory standards and where possible other 'best practice' standards</p> <p>In accordance with the Reserves General Policies, promote the Smokefree status of the reserves network</p> <p>Consider permitting advertising signage subject to written authorisation considering:</p> <ul style="list-style-type: none"> a) Whether signs are permanent or temporary b) Size, shape, colour and placement and the effect on amenity values c) The financial benefit that accrues to Council, or one of its partners, from the sponsorship sign. <p>Active use of the 'Environmental Care Code' and 'Tiaki Promise' on Park signage and through other information channels including the promotion of the 'pack it in pack it out' approach for rubbish</p> <p>Consider requests for plaques recognising the contribution by individuals or groups towards the development of the Park</p>	<p>High</p>
<p>8.1.6</p> <p>8.1.7</p>	<p>Following consultation with adjoining neighbours and Council lessees, close public vehicle access between Clover Road West and Bartlett Road to reduce potential conflict with other users</p> <p>Consider future further closure of public vehicle access between Bartlett Road and Blackbyre Road to reduce potential conflict with bermland tenants and other users, and to reduce extent and frequency of illegal rubbish dumping</p>	<p>Medium</p>
<p>8.3.4</p>	<p>Provide for pedestrian and bike access along all stopbanks</p>	<p>Medium</p>

Outcome areas	Action	Priority
8.2.1 8.2.2	Ensure walking access is available to popular swimming areas within the river from vehicle access points and that information regarding water quality for swimming is widely available through a variety of Council channels	Medium
8.3.1	<p>Formalise the recreation corridor for walkers and bikes along both sides of the river between the Kidson Bridge and Brightwater utilising:</p> <ul style="list-style-type: none"> • The stopbank structure (and road between the nursery and Challies Island) on the western side of the river to Waimea West Road • Existing track and road to the upper Tasman’s Great Taste Trail Swingbridge and beyond to Clover Road West on the eastern side of the river and to Bryant Road on the western side 	Medium
8.3.2	<p>Investigate the longer-term feasibility of further extending the recreation corridor by</p> <ul style="list-style-type: none"> • Extending the route upstream of Bryant Road and/or Clover Road West to the SH6 bridge and beyond 	Low
8.3.3	<p>Formalise/improve walking/running and biking circuits from the following key entry points:</p> <ul style="list-style-type: none"> • Appleby Reserve – Riverside to Kidson Bridge and stopbank return • Lower Queen St - carpark to Kidson Bridge, along western riverbank to SH60 bridge and return via western stopbank to bridge and carpark • Challies Island - Riverside track, road and stopbank • Bryant Road and Waimea West Road – Twin Rivers Walkway linking back along Waimea West Road (or offroad through future subdivision land acquisition) 	Medium
8.3.5	Advocate for dedicated pedestrian/cycling access over SH60 bridge to improve safety and provide improved access	Low
8.4.2-3	Work with the Nelson Cycle Trails Trust to further promote safe and courteous use of bikes within the park including:	Medium

Outcome areas	Action	Priority
	<ul style="list-style-type: none"> • Clear information at entrance points regarding biking safety protocols • Wider promotion of safe biking practices • Further measures to reduce wildlife disturbance if this becomes a significant issue in the delta or other high natural value areas 	
8.6.1	Work with clubs and users to identify and trial suitable sites for use by offroad motorised vehicles within the Tasman District	High
8.6.1 16.1.2	Advocate for wider site provision in the District for motorised offroad vehicles to reduce pressure on inappropriate locations in the Park and other reserve areas	High
8.6.2	Actively discourage recreational motorised vehicle use off existing developed gravel roads into sensitive areas of river margin and riverbed including: <ul style="list-style-type: none"> • Along the crest of the stopbanks along both sides of the Park 	High
	<ul style="list-style-type: none"> • Both sides of the river bermland downstream of the SH60 bridge. (excluding for boat launching and picnicking adjacent to the Appleby Reserve) 	High
	<ul style="list-style-type: none"> • Upstream of the SH60 bridge for 1km 	
	<ul style="list-style-type: none"> • Challies Island and recreation area off existing developed gravel roads 	High
	<ul style="list-style-type: none"> • Twin Rivers walkway from Waimea West Road to Bryant Road 	High
	Other areas of riverbed where continued access will endanger populations of threatened species	High
8.8.1	Provide for horse riding on multiple use tracks as follows: On the western bank south of the Appleby SH6 Bridge to the Wairoa – Wai-iti confluence (Horse float parking area, shared use protocol signage, further trail development as part of the Challies Island development)	Medium

Outcome areas	Action	Priority
	On the eastern bank between Bartlett Road and Clover Road West (exclusion of vehicles, shared use protocol signage surface improvements, adequate area for horse float parking at either end)	Medium
	On the eastern bank between Bartlett and Blackbyre road (shared use protocol signage surface improvements, area for horse float parking at either end if practically possible)	Low
8.8.2	Prohibit horse riding: <ul style="list-style-type: none"> • Downstream of the Appleby bridge on the west bank (including Tasman’s Great Taste Trail and Waimea Delta/Pearl Creek area) and downstream of Lower Queen St on the east bank. • On stop banks • On the Twin Rivers Track 	High
8.10.1	Continue to provide access for boat launching from the Appleby Reserve	Medium
8.10.2		
8.11.2	Liaise with Nelson/Marlborough Fish and Game Council to provide management oversight for gamebird hunting within the park including identifying expected use of the Park over the season to ensure hunters receive the best advice on suitable areas to hunt.	Medium
8.11.3		
8.11.4	Ensure hunters obtain permission from lessees prior to hunting on land leased for grazing or other uses.	Medium
8.12.1	Continue to support the Sports Fishing For Youth Charitable Trust, Fish and Game NZ (and any other relevant organisation) in the operation of the fishing ponds	Medium
8.14.1	Consider camping and overnight stay restrictions or prohibitions under the Freedom Camping bylaw if safety issues, damage or negative effects on other users or adjoining land uses become significant in the future	Low

Outcome areas	Action	Priority
<p>Lease and Licence Management</p> <p>1.2.4</p> <p>15.1.2</p>	<p>Ensure that lease and licence agreements:</p> <ul style="list-style-type: none"> • Reflect the purpose and permitted use of the activity • Are directly with the party undertaking the activity rather than formally or informally sublet • Provide reasonable rights and obligations including sufficient security of tenure, while ensuring flexibility for the Council to access the land if required for essential river control and flood management purposes. • Include rights and obligations for land used by the lessee as access to the leased area • Provide for closure of access to the Park and river for safety or other operational reasons but that these periods be minimised and that if possible alternative access points be provided • Require any statutory obligations to be complied with including any plant and animal pest control as required by the RPMP. 	<p>High</p>
<p>Gravel Extraction</p> <p>9.1.1</p>	<p>Provide for gravel extraction within the active riverbed for river management and flood control, under the direction of the Council Rivers team and in accordance with TRMP requirements.</p>	<p>High</p>
<p>9.1.2</p> <p>4.1.5</p>	<p>Provide for land-based gravel extraction within the bermlands subject to:</p> <ul style="list-style-type: none"> • Identification of suitable remaining areas for extraction • Effective management of potential adverse effects on the environment and other park values • An improvement to the area, such as wetland creation, following the conclusion of extraction 	<p>Medium</p>
<p>9.2.1</p>	<p>For existing gravel processing to be transitioned out of the Park upon lease renewal, and no new processing areas approved, unless downstream environmental risks from flooding events can be adequately mitigated</p>	<p>Medium</p>

Outcome areas	Action	Priority
9.2.2	<p>The Council will work with gravel extraction and processing operators to minimise adverse impacts on other park values and activities through lease conditions to require:</p> <ul style="list-style-type: none"> • Developing clear performance criteria that will guide future lease renewals • Prohibiting the stockpiling of any Class 4³⁹ materials within the stopbank area, or the stockpiling of imported soil, woody debris, road trimmings, etc. without appropriate management controls including limited duration, compliance reporting, and sedimentation controls • Providing suitable width buffer strips where possible to reduce cross boundary effects to the riverbed and stopbanks • Maintaining access for walkers and cyclists to stopbanks outside of leased areas and limiting public access closure periods to shared use operational areas and providing alternative accessways where possible. 	High
9.2.3	Review the policy and methodology for gravel allocation and for calculating fees and charges	High
Agriculture and Horticulture 9.3.1, 9.3.2	Continue to provide for pastoral grazing in Park locations where this serves an important management function otherwise consider retirement of pastoral grazing areas into native habitat areas as lease terms and available Park management funds allow	High
9.3.3	Ensure new leases include adequate buffers around riparian areas, monitoring sites, and bores, can be cancelled at short notice and that the lease agreement is directly with the farmer rather than informally sublet.	High
9.3.1	Work with lessees to ensure best practice farming on Council land including:	High

³⁹ Technical Guidelines for Disposal to Land (2022)

Outcome areas	Action	Priority
	<ul style="list-style-type: none"> • Development of meaningful and practical Farm Plans⁴⁰ or equivalent 'best practice' environmental management practices linked to lease conditions including active measures to limit nitrate and stock access to waterways. • Implementing operating practices to prevent the use of stopbanks for stock movement and the removal of barriers to public access • Taking other actions as necessary to ensure that farming operations integrate well within the wider management context 	
9.4.1	Transition from the Park, capital-intensive horticultural land uses such as vineyards or orchards, that do not contribute positively to flood management and other Park outcomes and do not permit new areas	High
9.4.2	Consider by exception, arable farming with appropriate soil management plans and monitoring and reporting requirements	
Recreation Concessions 9.5.1	Permit new commercial recreation activities in the park, provided such activities: <ul style="list-style-type: none"> • do not require installation of high value or permanent structures and other assets • do not require exclusive use of land that is publicly used. • are compatible with other park management objectives 	Medium
Infrastructure 10.2.1	Park management activities and public use will be managed to ensure they do not compromise the operation, or access to network infrastructure by network operators.	High
Legal protection 4.1.2	Work with Waimea Water Ltd in completing the 10Ha Waimea Community Dam offset mitigation planting including ensuring that the site is adequately legally protected as required by the 2015 Environment Court Consent Order.	High

⁴⁰ Or an equivalent informal plan if the farm is under 20 hectares

Outcome areas	Action	Priority
4.1.3	When possible, commence process to increase the level of legal protection for the delta area to Nature Reserve as specified within the Moutere Waimea Ward Reserves Management Plan	Medium
Land acquisition	Identify any strategic land acquisitions where this supports plan objectives and that these are actively pursued by purchase or by entering 'Right of First Refusal' agreements	High
15.1.1		
Compliance and enforcement	Provide targeted information through a variety of communication channels to explain the purpose and benefits of management policies and the consequences of inappropriate actions on the environment and other users	High
16.1.1		
2.1.5	Actively manage and respond to inappropriate behaviours including:	
16.1.4	<ul style="list-style-type: none"> • control spread of point source pollution • removal of dumped material • repair of vandalism or graffiti • installation and maintenance of barriers to control vehicle access • removal of features built for offroad vehicle use if not a designated area • Surveillance and timely collection of evidence and legal action where appropriate 	High
2.1.6	Active monitoring and enforcement of Resource Consent conditions for consented activities within the Park	High
3.1.2	Enforce Dog Bylaw restrictions	High
15.1.3	Actively monitor and respond to Park encroachment as it arises by giving notice to the party requesting removal of any encroachment and the reinstatement of the area to the satisfaction of the Council within a specified period at the owners cost.	Medium

Appendices

Appendix 1 - Glossary

ahi kā - keeping the fires burning – i.e. maintaining occupation.

ara tawhito - traditional route/pathway

awa – river or stream

berm or bermlands – Area of land on the banks of the river within the stopbanks excluding the active channels

harakeke - flax (phormium tenax).

iwi - tribe, people.

kāinga - village.

kaitiakitanga - caretaking, guardianship.

kotahitanga - unity, togetherness.

mahinga kai - food-gathering areas.

mahinga rongoā - places of traditional resources (medicinal plants etc.)

mana - status, standing, control, authority.

mauri – life force, essential quality and vitality of a being or entity

manaakitanga - assistance and care for others.

manawhenua - dominion, control, ownership, of land; people with authority over the land.

pā - fortified, palisaded village.

rangatiratanga - chieftainship

tangata whenua - the people of the land, i.e. the residents with customary rights.

taonga - treasure, valuables.

tapu - sacred

Te Tai Poutini - west coast of the South Island

Te Taihu - Prow (of a canoe), Top of the South Island

wāhi tapu - sacred place.

wai - water

wairua – spirit/soul

whanaungatanga - relationship(s)

whenua- land

Appendix 2 – Standards

Walking

- (a) New Zealand Handbook Tracks and Outdoor Visitor Structures SNZ HB 8630:2004.
- (b) Track Construction and Maintenance Guidelines – VC 1672 Department of Conservation: 2008

Biking

- (c) New Zealand Mountain Bike Trail Design & Construction Guidelines – July 2018.
- (d) New Zealand Cycle Trail Design Guide August 2019 (5th edition) Prepared for Ministry of Business Innovation and Employment.

User Behaviour

- (e) Shared Use Trail protocols
 - Keep left and pass others at a walking pace. Give way to horses.
 - Be friendly to others – call out when you approach from behind.
 - Always keep your dog, horse, or bike under control.
- (f) New Zealand Environmental Care Code

Leave no trace : <https://www.mountainsafety.org.nz/learn/skills/environment/>

Tiaki Promise <https://www.tiakinewzealand.com/>

Noise Control

- (g) TRMP Standards

Signage

- (h) Tasman District Council branding and signs guidelines
- (i) NZS 8603:2005 Design and application of outdoor recreation symbols.

Park Entrances

Level	Locations	Asset Standards	Service Levels
Level 1 Primary Entrances	<ul style="list-style-type: none"> • Lower Queen Street • Appleby Bridge Recreation Reserve • Challies Road 	<ul style="list-style-type: none"> • Parking for multiple vehicles (10+) • Barrier free entry⁴¹ • Signboard • Toilets • Picnic Tables • Shade 	<ul style="list-style-type: none"> • Regular servicing of toilets and waste facilities • Grounds maintenance • Repairs and maintenance as required
Level 2 Secondary Entrances	<ul style="list-style-type: none"> • Waimea West Road (Tomlinson Picnic Area) • Bryant Road • Pugh Road 	<ul style="list-style-type: none"> • Parking for several vehicles (5-10) (including for large vehicles & trailers) • Barrier free entry 	<ul style="list-style-type: none"> • Grounds maintenance • Repairs and maintenance as required
Level 3 Minor Entrances	<ul style="list-style-type: none"> • Appleby Quarry entrance road • Blackbyre Road - Bartlett Road • Clover Road West • Waimea West Road (Wai-iti River East Bank) • River Road (2) • Livingstone Road • Cotterell Road 	<ul style="list-style-type: none"> • Parking (0-5) • Entrance sign 	<ul style="list-style-type: none"> • Timely response to vandalism, dumping, fires etc. • Mowing to manage fire hazard as required

⁴¹ Suitable for wheelchair, mobility scooter, baby buggy and bike access.

Appendix 3 – Threatened and Taonga Species - Management Tools

Name		Scientific Name	Status	Management
Riverbed Habitat - Freshwater Fish				
Īnanga	Panoko	<i>Galaxias maculatus</i>	Declining	Gravel extraction works undertaken outside of nesting season Limiting vehicle access to active channels Shade
Kōaro		<i>Galaxias brevipinnis</i>	Declining	
Giant kōkopu		<i>Galaxias argenteus</i>	Declining	
Torrentfish		<i>Cheimarrichthys fosteri</i>	Declining	
Blue gilled bully		<i>Gobiomorphus hubbsi</i>	Declining	
Red fin bully	Tuna	<i>Gobiomorphus huttoni</i>	Declining	
Longfin eel		<i>Anguilla dieffenbachia</i>	Declining	
Riverbed Habitat - Birds				
Black fronted tern	Tarapirohe	<i>Chlidonias albostratus</i>	Endangered	Controlling vehicle access to nesting and roosting areas
Caspian tern	Taranui	<i>Hydroprogne caspia</i>	Vulnerable	
Banded dotterel	Pohowera	<i>Anarhynchus bicinctus</i>	Declining	Dog Control
SI Pied oystercatcher	Tōrea	<i>Charadrius melanops</i>	Declining	River management to create/protect braids
Black-fronted dotterel		<i>Haematopus finschi</i>	Uncommon	
Pied shag	Kāruhiruhi	<i>Phalacrocorax varius</i>	Recovering	Clearing islands as refuges
Black shag	Māpunga	<i>Phalacrocorax carbo</i>	Relict	Gravel extraction works undertaken outside of nesting season
Little shag	Kawaupaka	<i>Microcarbo melanoleucos</i>	Relict	
Pied stilt	Poaka	<i>Himantopus Himantopus</i>	Not threatened	
Marsh/Wetland Habitat				
Australasian bittern	Matuku-hūrepo	<i>Botaurus poiciloptilis</i>	Critical	Habitat creation and enhancement
Banded rail	Moho pererū	<i>Hypotaenidia philippensis</i>	Declining	Predator control
Marsh crake	Kotoreke	<i>Zapornia pusilla</i>	Declining	Dog Control
Spotless crake	Pūweto	<i>Zapornia tabuensis</i>	Declining	Limiting human activity to reduce disturbance
SI fernbird	Mātātā	<i>Poodytes punctatus</i>	Declining	
Flax	Harakeke	<i>Phormium tenax</i>	Not threatened	Protection and restoration of wetlands
Alluvial/Riparian Habitat				
Kererū		<i>Hemiphaga novaeseelandiae</i>	Not threatened	Restoration of alluvial lowland podocarp forest
Tūi		<i>Prosthemadera novaeseelandiae</i>	Not threatened	
Coastal/Estuarine Habitat				
White heron	Kōtuku	<i>Ardea alba Linnaeus</i>	Critical	Habitat creation and enhancement
Royal spoonbill	Kōtuku ngutupapa	<i>Platalea regia</i>	Uncommon	Predator control
Little egret		<i>Egretta garzetta</i>	Vulnerable	Dog Control
Delta/Sea sedge		<i>Carex litorosa</i>		

Appendix 4 – Mountains to the Sea – Land and Water Review framework

Vision for the Waimea/Waimeha

It is 2100, our waterbodies are healthy, connected and resilient where indigenous ecosystems and biodiversity are thriving, providing abundant mahinga kai, food and resource gathering and fishing. All waterbodies and their margins have high natural character and have room to move and adapt.

It is 2035, our land and freshwater management provides for our community's social, economic and cultural wellbeing. People have access to safe, clean water for drinking, swimming, recreation and cultural uses.

It is 2040, sustainable and integrated land and water management practices protect the ecosystem health and natural character of our aquifers, rivers, lakes, springs and wetlands, and provides for our agriculture, tourism, commercial and industry sectors. Our urban development connects us to our backyard waterbodies.

It is 2055, our communities and livelihoods are resilient to our changing climate, floods and droughts. We have enabled use of renewable energy and water storage and our food producing areas, including the Waimea Plains, continue to play an important role for local food security.

We all respect and take responsibility for freshwater health. We value the taonga we are protecting. Through collaboration and innovation, we have adapted to new ways of doing things. We have restored, protected and maintained freshwater habitats and the quality and quantity of freshwater, enabling sustainable use for generations to come.

Our urban communities and productive land users protect the interconnected system of waterbodies that feed into the Waimea Inlet and Tasman Bay. The nitrate levels are improving along with the health of the aquifers and spring-fed streams. Urban stormwater is kept clean or treated before entering streams. The Waimea Inlet is vibrant and healthy, teeming with bird life.

Values	Environmental outcomes
Ecosystem Health	Outcome 1 water quality
	Outcome 2 quantity
	Outcome 3 habitat
	Outcome 4 aquatic life
	Outcome 5 ecological processes
Human Contact	Outcome 6 for Human contact:
Mahinga kai	Outcome 7 for Mahinga kai:
Threatened Species	Outcome 8 for Threatened species
Natural form and character	Outcome 9 for Natural form and character
Drinking water supply	Outcome 10 for Drinking water supply
Wai tapu	Outcome 11 for Wai tapu
Transport and tauranga waka	Outcome 12 for Transport and tauranga waka
Hydroelectric generation	Outcome 13 for Hydroelectric generation
Fishing	Outcome 14 for Fishing
Irrigation	Outcome 15 for Irrigation
Animal Drinking Water	Outcome 16 for Animal drinking water
Commercial and industrial use	Outcome 17 for Commercial and industrial use
Public access	Outcome 18 for Public access
Aggregate resources	Outcome 19 for Aggregate resources
Resilience to climate change	Outcome 20 for Resilience to climate change
Kaitiakitanga / Stewardship	Outcome 21 for Kaitiakitanga / Stewardship

Appendix 5 - References

Department of Conservation, (2021) *Conservation Status of Birds in Aotearoa New Zealand*

Forest and Bird NZ (2022) *Tukua Ngā Awa Kia Rere - Making Room for Rivers*

GNS Science (2024). *Aggregate Opportunity Modelling for the Tasman District of New Zealand*. Report No 2024/34

Kotahitanga mō te Taiao (2019) *Kotahitanga mō te Taiao Strategy*

Kingi T. (2016). *Aotūroa Framework, Section 3: Te Tau Ihu Iwi Whakamahere Wakatū* (document). Karewarewa Innovations Consultancy.

Kiwi Coast, QEII National Trust, Fish and Game NZ (2024) *Matuku Hūrepo (Australasian Bittern) 2023 Northland Survey*

Leathwick, John (2019), *Indigenous Biodiversity Rankings for the Tasman Region*. Report prepared for the Tasman District Council

Marsden R.M. (1975). God, Man & Universe: A Māori View in ‘*Te Ao Hurihuri: The World Moves On*’ .

McArthur, Nikki, Melville, David, Schuckard, David (2022) *A review of Management Issues and options for Coastal Birds in the Tasman District*

Mitchell H. & M.J. (2004). *History of Māori of Nelson and Marlborough. Volume 1 of Te Tau Ihu o te Waka: Te Tāngata me Te Whenua - The People and the Land*. Huia Publishers, Wellington, NZ.

Mitchell, Hilary and John (2008). *Cultural significance of Māori Archaeological Sites and Wāhi Tapu in the Tasman District*. Mitchell Research.

Nelson City Council, Tasman District Council, (2019) *Nelson Tasman Future Development Strategy*

Ngā Iwi o Te Tau Ihi, Ngā Kaunihera o Te Taihū, (2023) *Together TeTaihū. A Partnership Agreement for a Stronger Te Taihū*

Ngāti Kōata Trust, (2002) *Iwi Management Plan*

Ngāti Kuia, (Maddy Williams) *Sites of Waimeha*.

Ngāti Rārua, (2021) *Environmental Plan*

Ngāti Tama, (2018) *Environmental Management Plan*

NIWA. (2023). *Angler usage of New Zealand lake and river fisheries*. Results from the 2021/22 National Angler Survey prepared for Fish and Game New Zealand.

North M. (2006). *Site Assessment Report for Site MU 79 (saltmarsh alongside Moreland Place Esplanade Reserve)*. Report prepared for Tasman District Council, Native Habitats Tasman (NHT) programme.

North M. (2010). *Ecological Assessment Report for Site MO 19 (Pearl Creek Esplanade Reserve)*. Report prepared for Tasman District Council, Native Habitats Tasman (NHT) programme.

North M. (2010). *Ecological Assessment Report for Sites MO 53, 76 & 77 (Pearl Creek Reserve)*. Reports prepared for Tasman District Council, Native Habitats Tasman (NHT) programme.

Tasman District Council (2022) *Te Mana o te Taiao ki te Tai o Aorere - Tasman Biodiversity Strategy*

Tasman District Council, *Freshwater Management Overview for the Te Mana o te Wai Collaborative Project*

Tasman District Council,(2015) *Reserves General Policies*.

Tasman District Council, (2022) *Moutere - Waimea Ward Reserve Management Plan*

Tasman District Council, (2024) *Catchment Enhancement Strategy*

Tasman District Council, (2024) *Rivers Activity Management Plan*

Tasman District Council, Nelson City Council, Marlborough District Council (2024) *Summary of Te Taihu Statutory Acknowledgements*

Tasman District Council, Nelson City Council (updated 2024) *Tasman Nelson Regional Pest Management Plan 2019-2029*

Tasman District Council, (2018) *Responsible Camping Strategy*. Input to strategy on Te Ao Māori by Ursula Passel

Te Ātiawa o te Waka a Māui,(2014) *Environmental Management Plan*

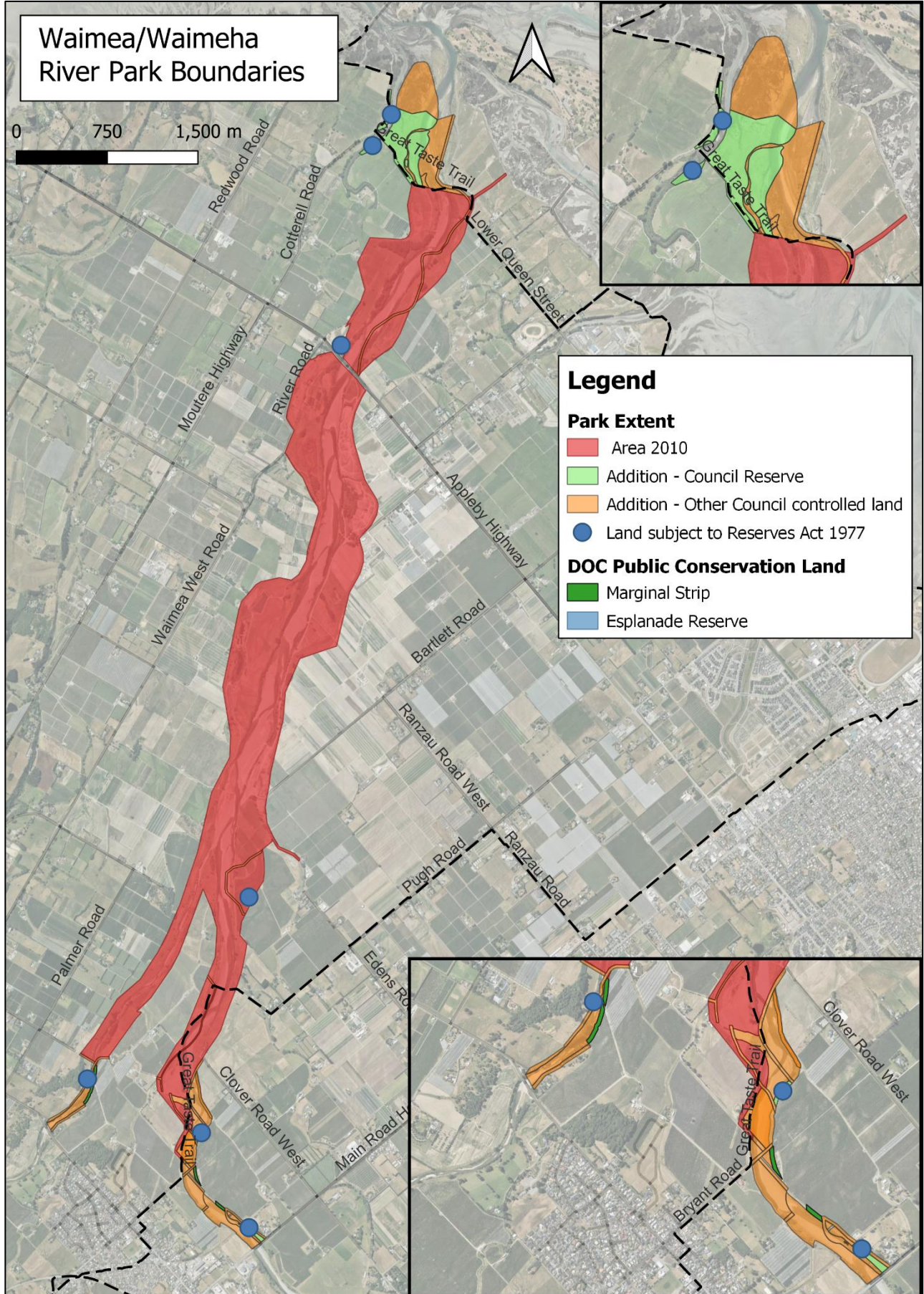
Te Rūnanga o Ngāti Rarua (2021). *Poipoia Te Ao Tūroa: Ngāti Rarua Environmental Strategy*

Singers, Nicholas, (2019) *A Potential Ecosystem Map for the Tasman District*. Report prepared for the Tasman District Council

Waimea Inlet Forum (2023) *Waimea Inlet Management Strategy 2025 and Action Plan 2023 to 2026*

Waste Management Institute NZ Inc. (2022), *Technical Guidelines for Disposal to Land*

Appendix 6 – Park Area



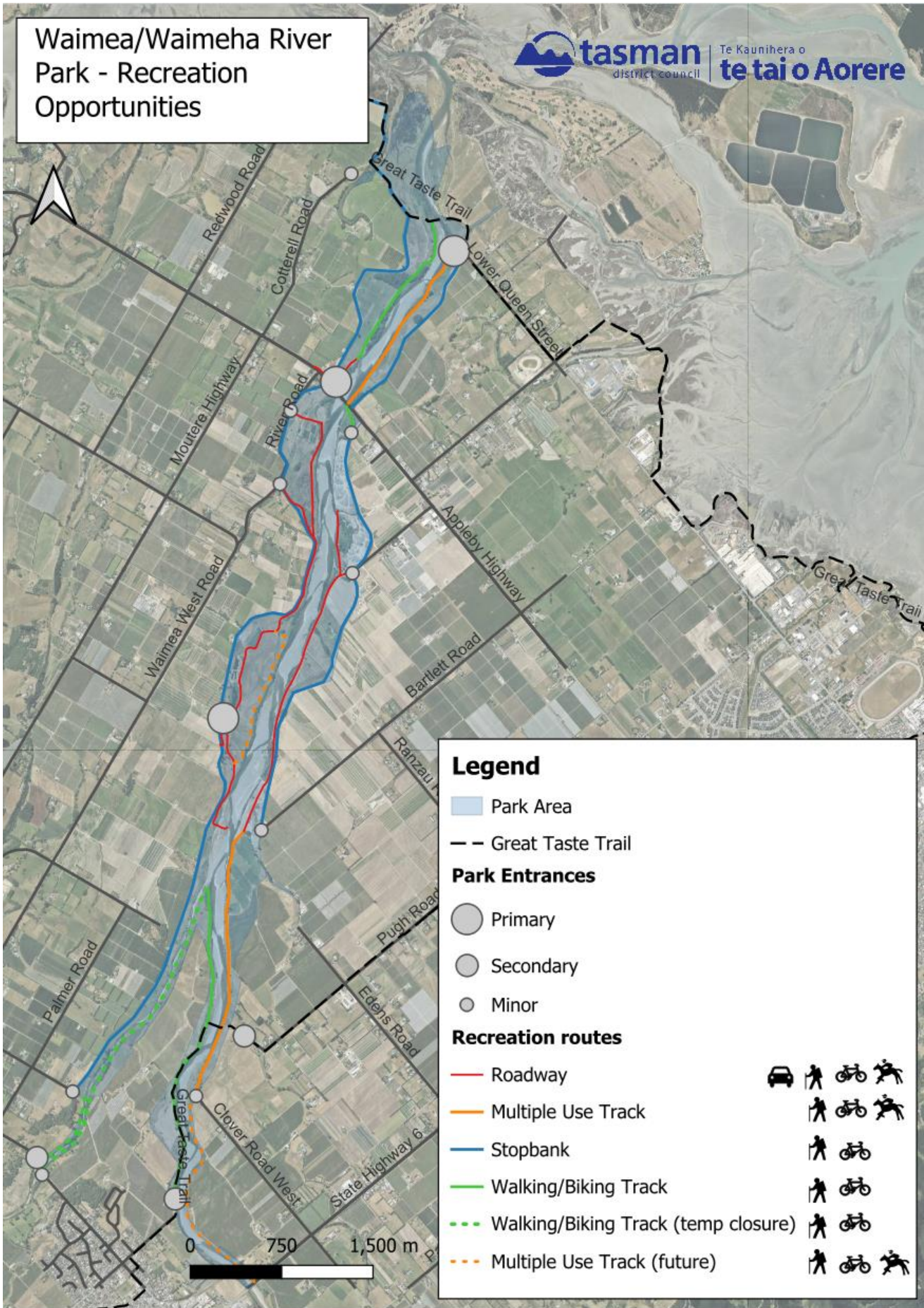
Council reserves within the Park subject to Reserves Act (1977) Management Plans**Waimea Moutere Ward Reserve Management Plan**

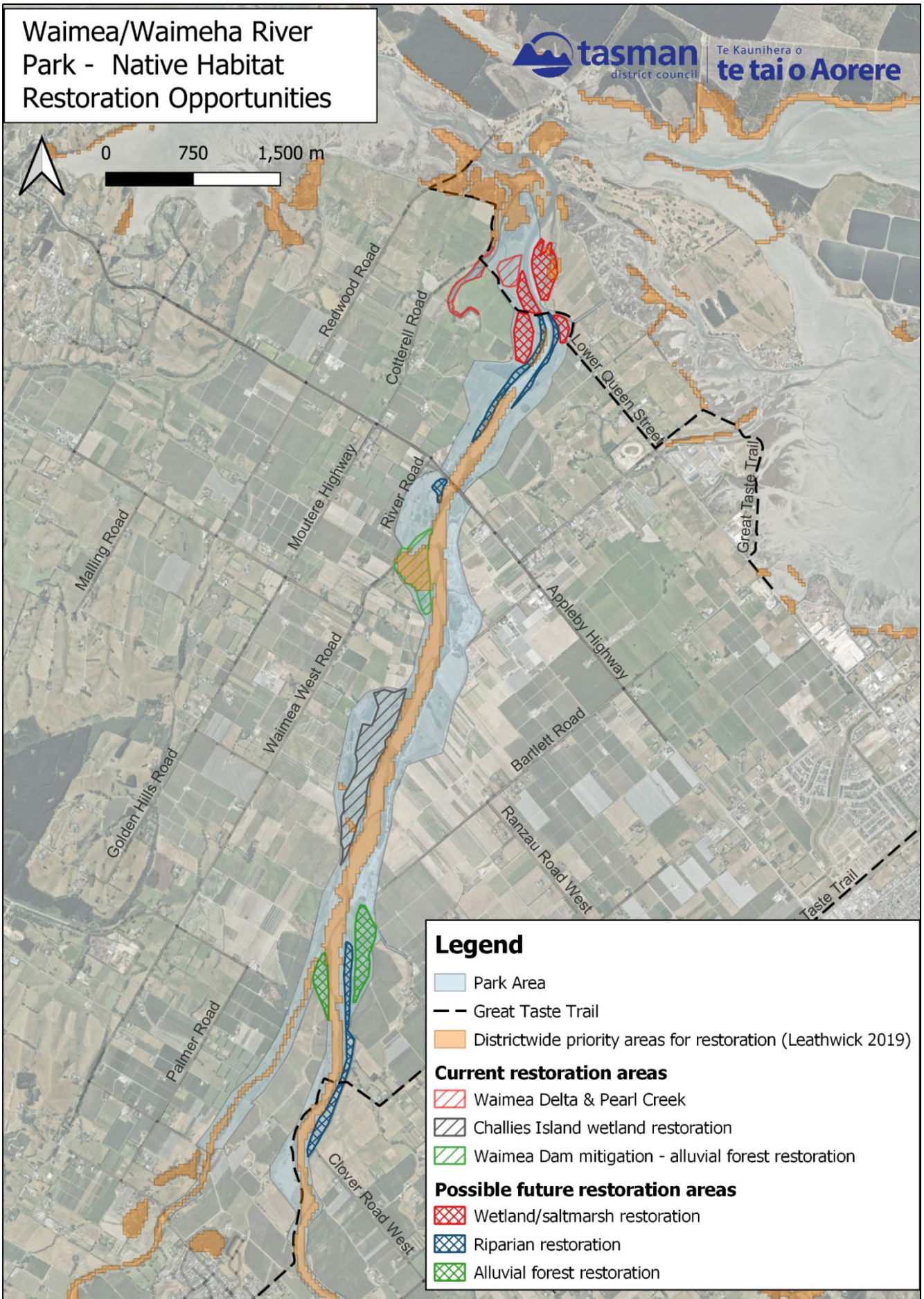
Reserve name	Classification	Legal description	Area
Pearl Creek Reserve	Unclassified	Pt Lot 3 DP 5472, Pt Lot 1 DP 5472, Lot 4 DP 5472, Lot 5 DP 5472, Pt Lot 2 DP 5472	13.7683 Ha
Pearl Creek Esplanade Reserve	Local Purpose (Esplanade)	Lot 1 DP 500380	0.8940 Ha
Cotterell Road Esplanade Reserve	Local Purpose (Esplanade)	Lot 9 DP 18160	1.0950 Ha
Part Appleby Bridge Recreation Reserve (river side of stopbank)	Recreation Reserve	Pt Sec 2 Blk II Waimea SD	1.195 Ha
Palmer Road Esplanade Reserve	Local Purpose (Esplanade)	Lot 2 DP 19534	0.0234 Ha

Richmond Ward Reserve Management Plan

Reserve name	Classification	Legal description	Area
Waimea River Esplanade Reserve	Local Purpose (Esplanade)	Lot 3 DP 363658	1.7181 Ha
Clover Road West Esplanade Reserve	Local Purpose (Esplanade)	Sec 2 SO 355132	0.2850 Ha
Lightband Road West Esplanade Reserve	Local Purpose (Esplanade)	Pt Sec 171 Waimea East District, Pt Sec 170 Waimea East District	0.9997 Ha

Appendix 7 – Management Maps





NOTE: Proposed new restoration areas will require evaluation of potential impact on flood management, ecological value, and availability of funding resources before proceeding

